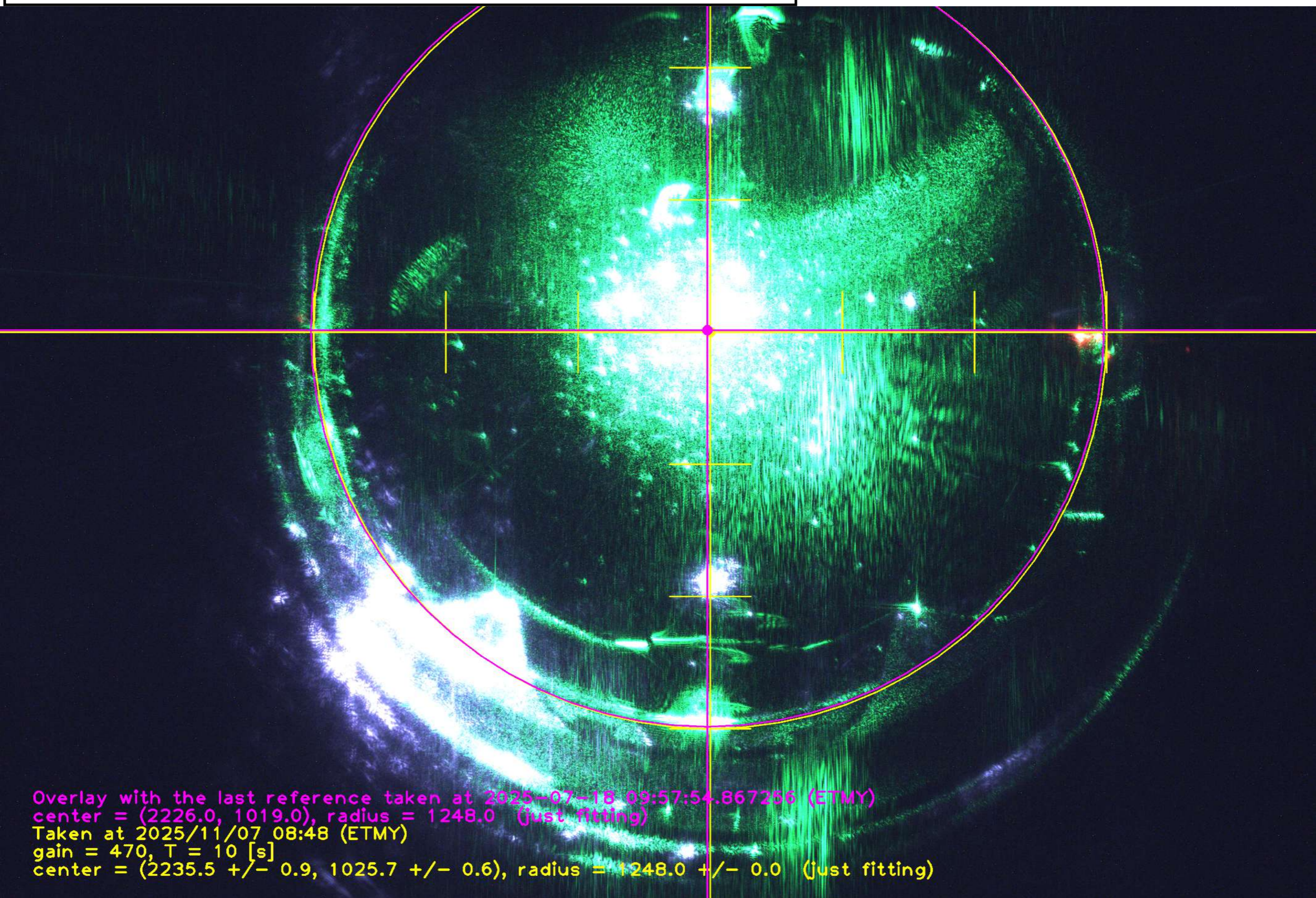


# ETMY

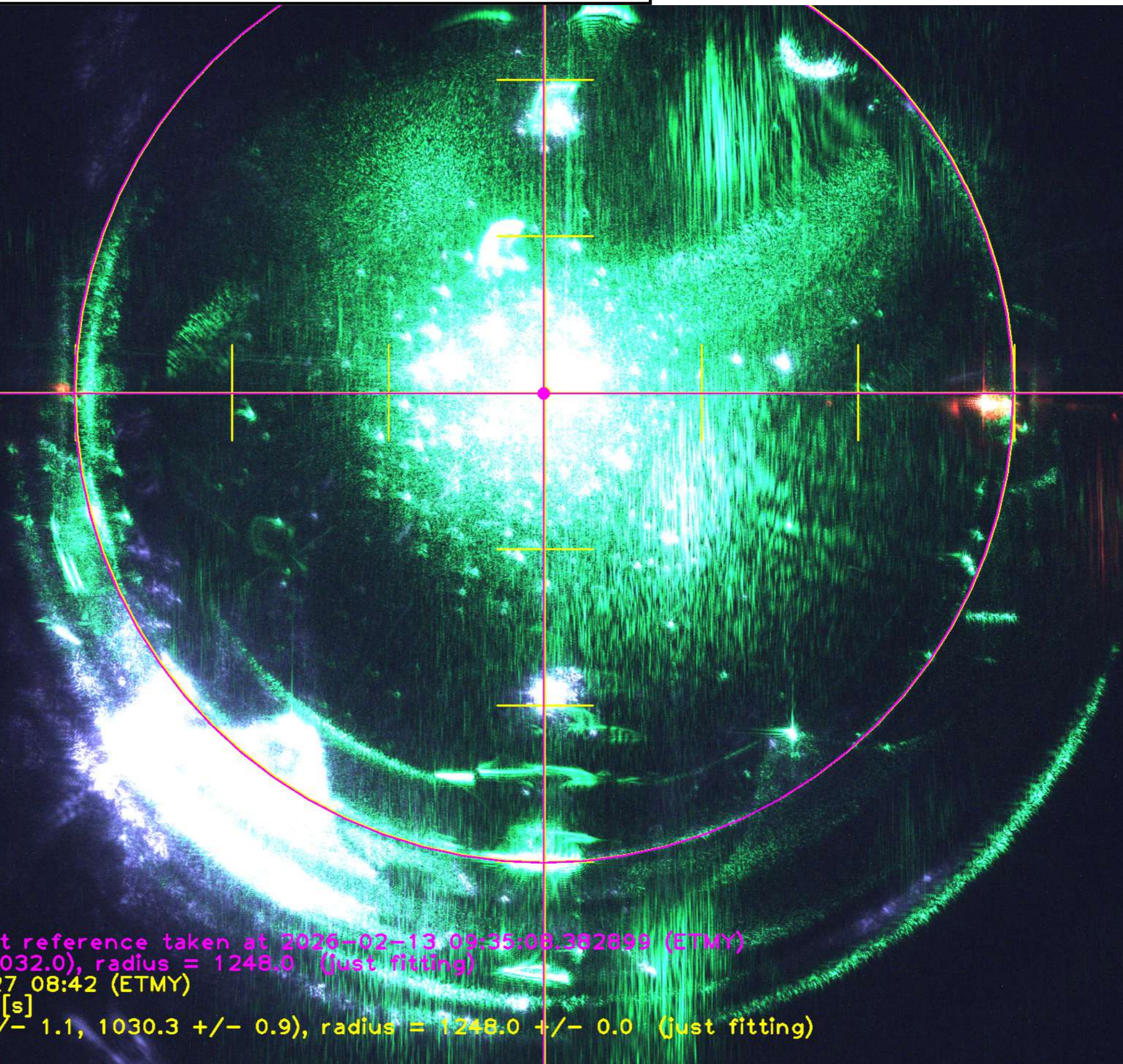
## overview

ETMY : 2025/11/07 55K

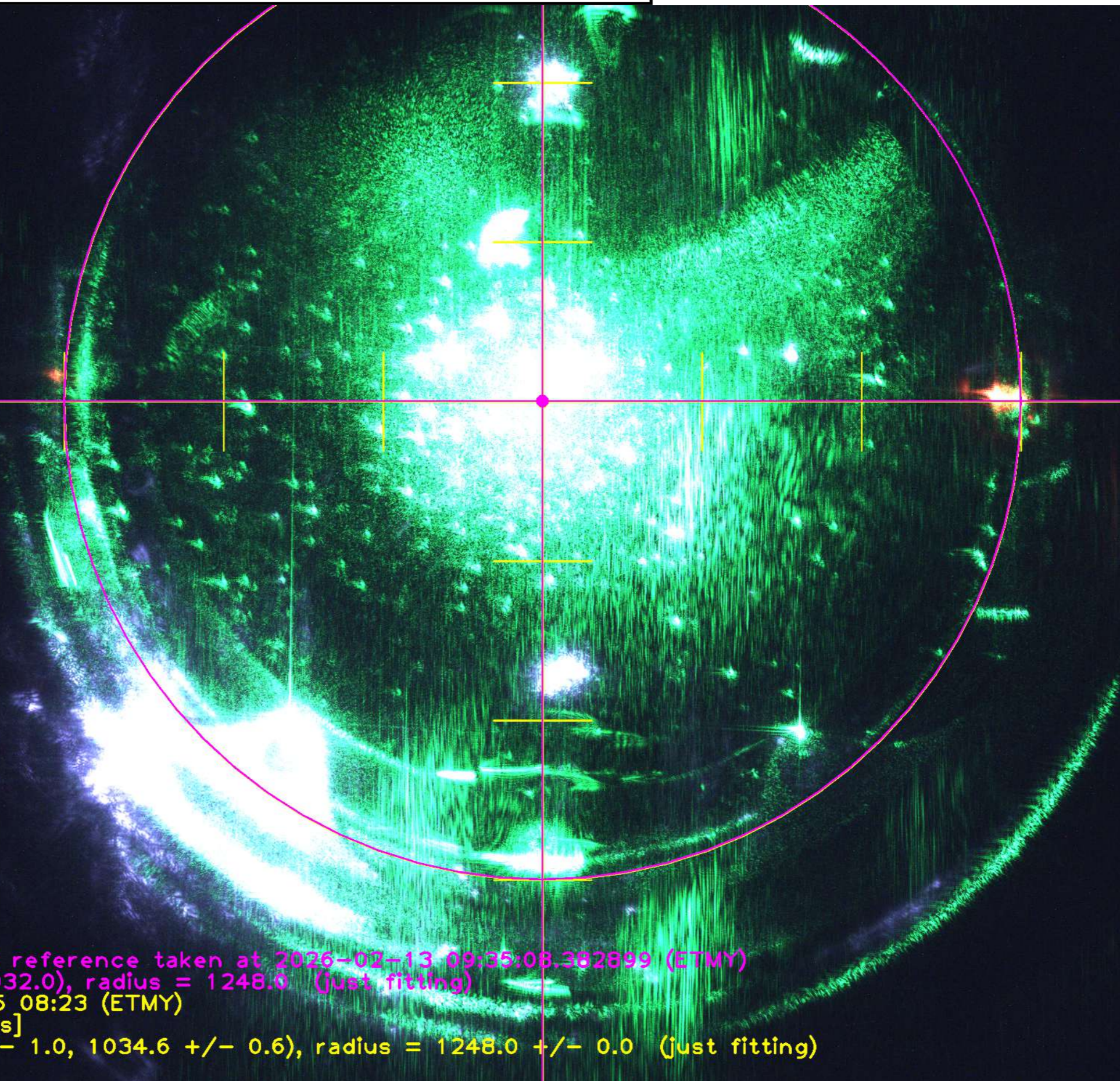


Overlay with the last reference taken at 2025-07-18 09:57:54.867256 (ETMY)  
center = (2226.0, 1019.0), radius = 1248.0 (just fitting)  
Taken at 2025/11/07 08:48 (ETMY)  
gain = 470, T = 10 [s]  
center = (2235.5 +/- 0.9, 1025.7 +/- 0.6), radius = 1248.0 +/- 0.0 (just fitting)

ETMY : 2026/02/27 296K

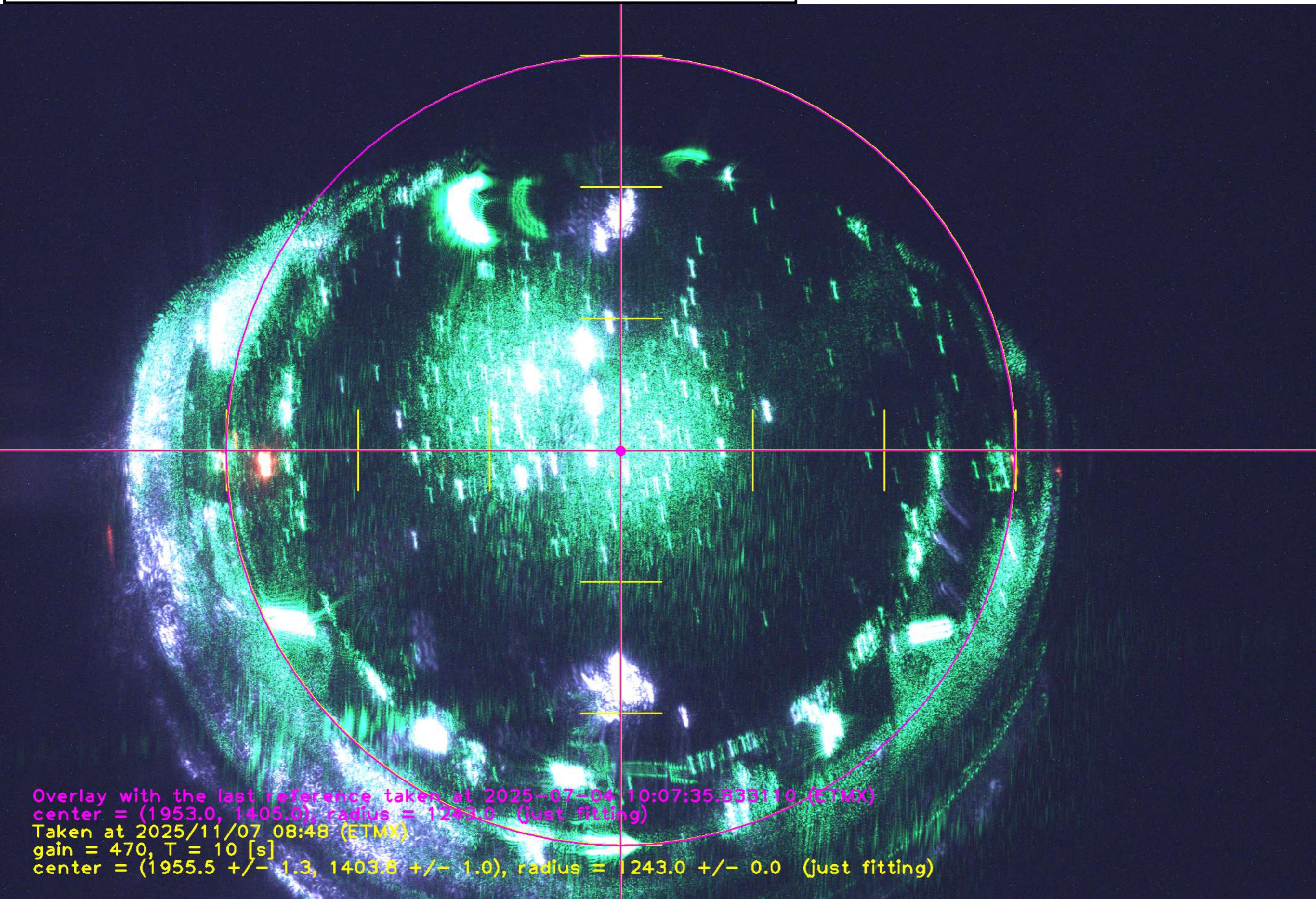


Overlay with the last reference taken at 2026-02-13 09:35:08.382899 (ETMY)  
center = (2221.0, 1032.0), radius = 1248.0 (just fitting)  
Taken at 2026/02/27 08:42 (ETMY)  
gain = 470, T = 10 [s]  
center = (2225.4 +/- 1.1, 1030.3 +/- 0.9), radius = 1248.0 +/- 0.0 (just fitting)



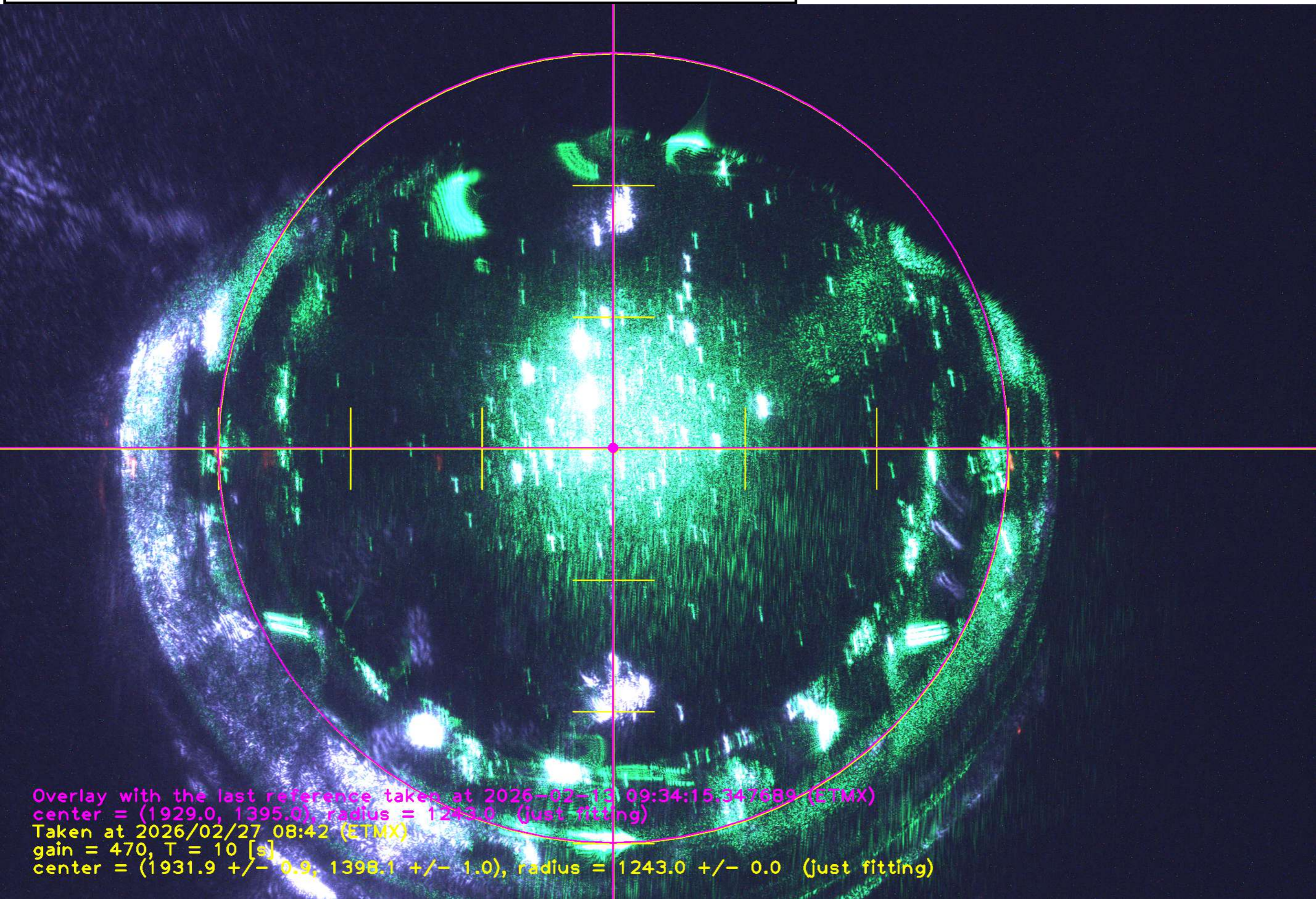
Overlay with the last reference taken at 2026-02-13 09:35:08.382899 (ETMY)  
center = (2221.0, 1032.0), radius = 1248.0 (just fitting)  
Taken at 2026/04/16 08:23 (ETMY)  
gain = 470, T = 10 [s]  
center = (2222.9 +/- 1.0, 1034.6 +/- 0.6), radius = 1248.0 +/- 0.0 (just fitting)

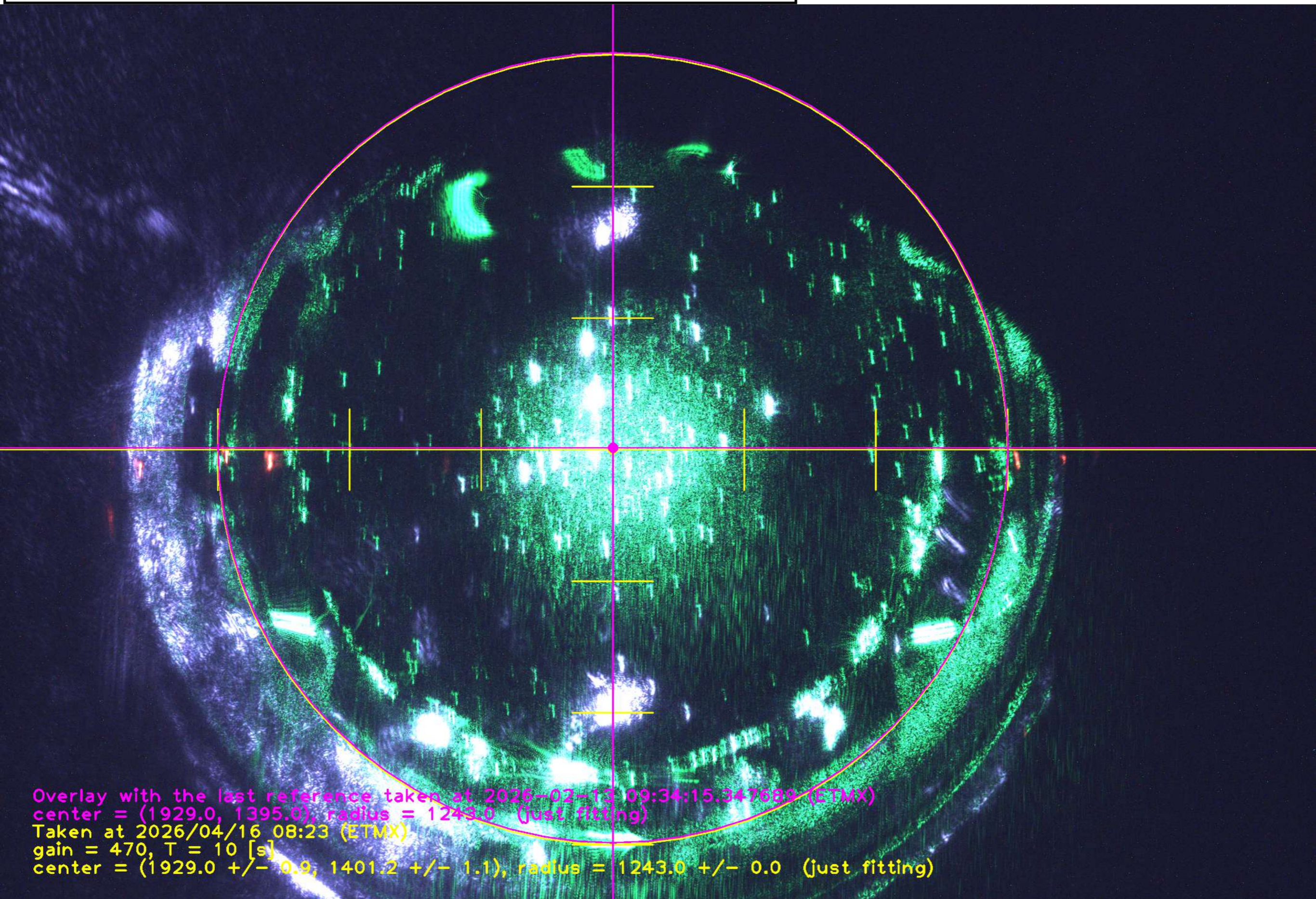
# ETMX overview



Overlay with the last reference taken at 2025-07-04 10:07:35.833110 (ETMX)  
center = (1953.0, 1405.0), radius = 1243.0 (just fitting)  
Taken at 2025/11/07 08:48 (ETMX)  
gain = 470, T = 10 [s]  
center = (1955.5 +/- 1.3, 1403.8 +/- 1.0), radius = 1243.0 +/- 0.0 (just fitting)

ETMX : 2026/02/27 297K

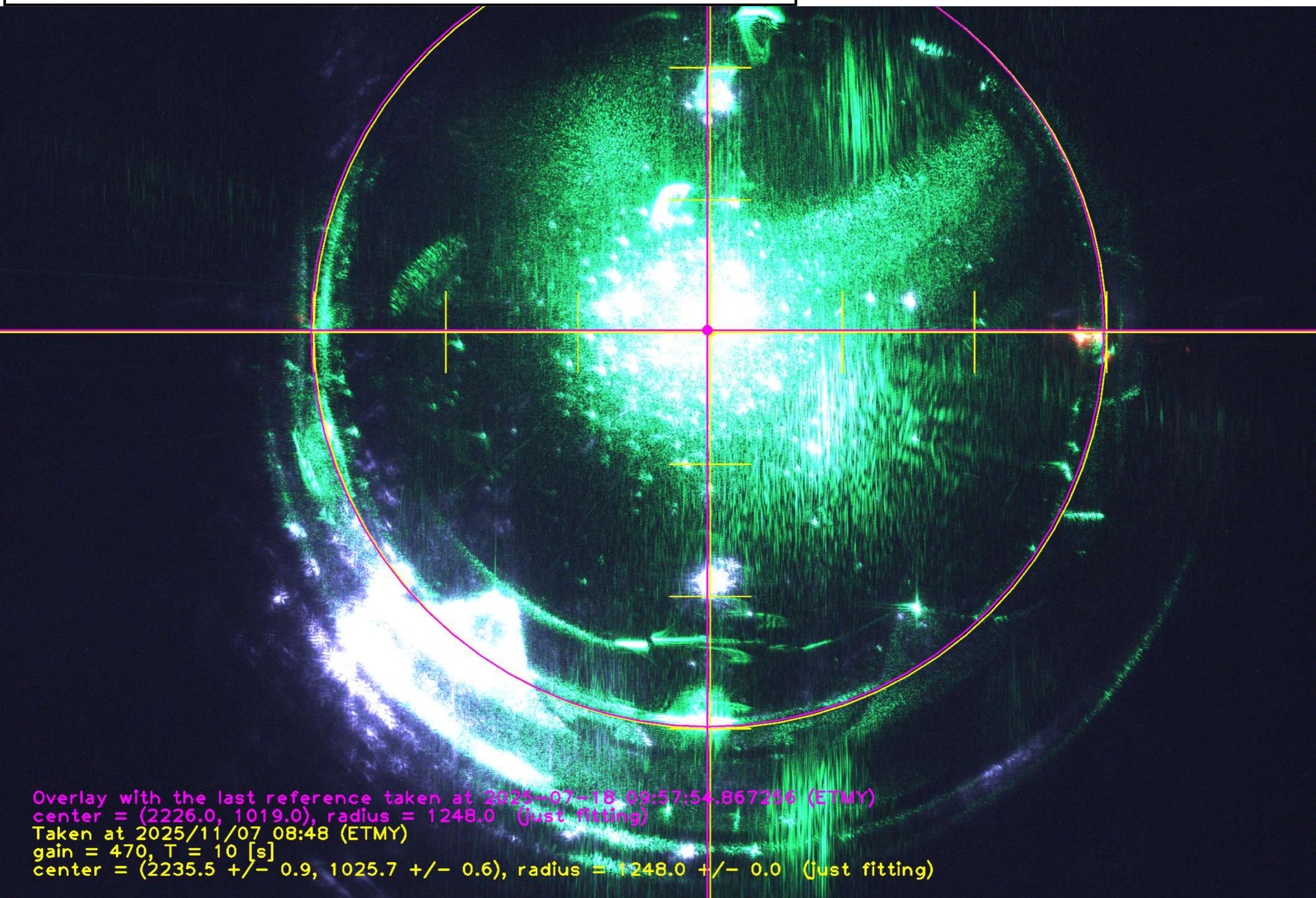




Overlay with the last reference taken at 2026-02-13 09:34:15.347689 (ETMX)  
center = (1929.0, 1395.0), radius = 1243.0 (just fitting)  
Taken at 2026/04/16 08:23 (ETMX)  
gain = 470, T = 10 [s]  
center = (1929.0 +/- 0.9, 1401.2 +/- 1.1), radius = 1243.0 +/- 0.0 (just fitting)

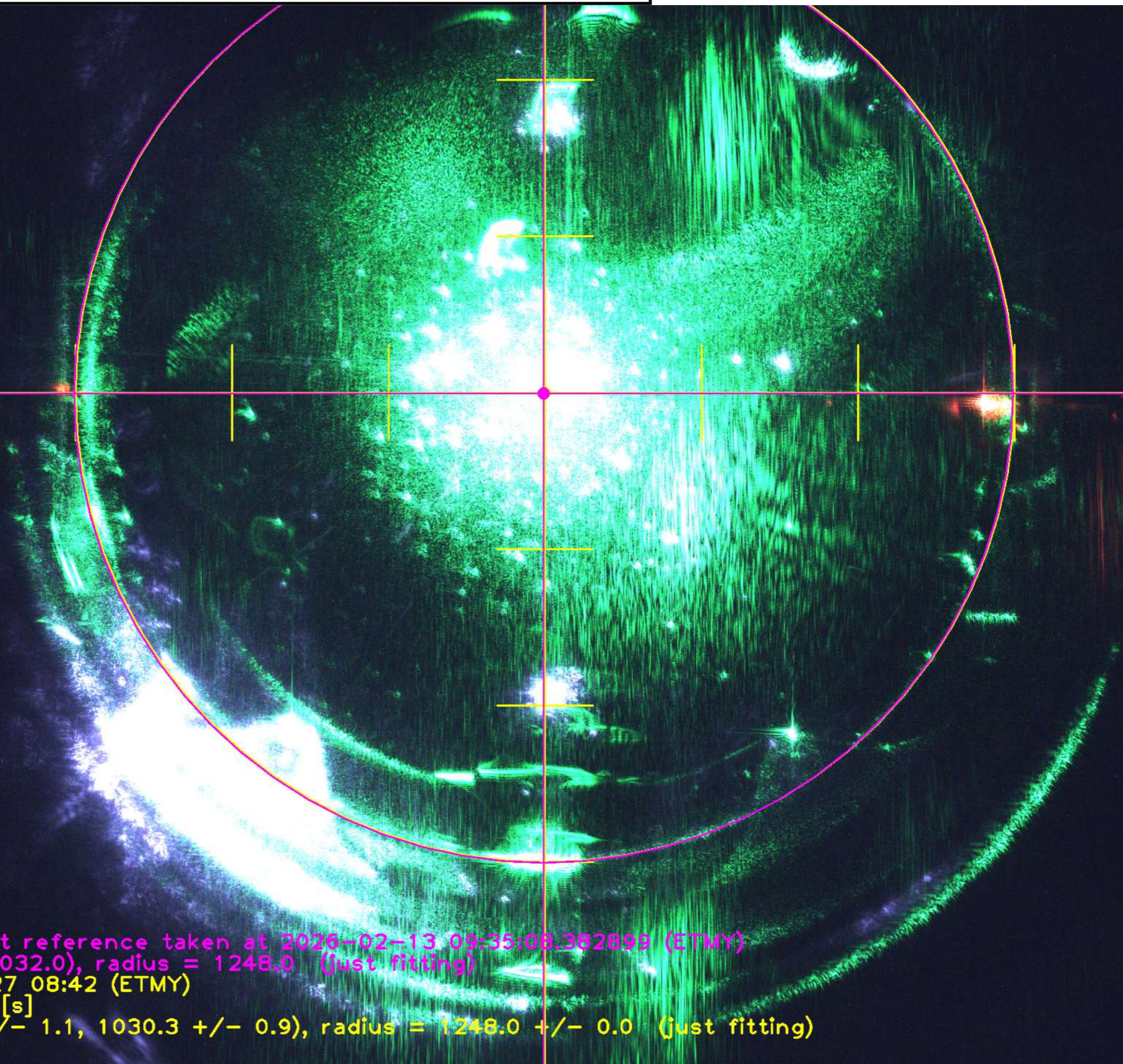
ETMY discussion  
2025/11 -> 2026/02  
55 K -> 296 K

ETMY : 2025/11/07 55K



Overlay with the last reference taken at 2025-07-18 09:57:54.867256 (ETMY)  
center = (2226.0, 1019.0), radius = 1248.0 (just fitting)  
Taken at 2025/11/07 08:48 (ETMY)  
gain = 470, T = 10 [s]  
center = (2235.5 +/- 0.9, 1025.7 +/- 0.6), radius = 1248.0 +/- 0.0 (just fitting)

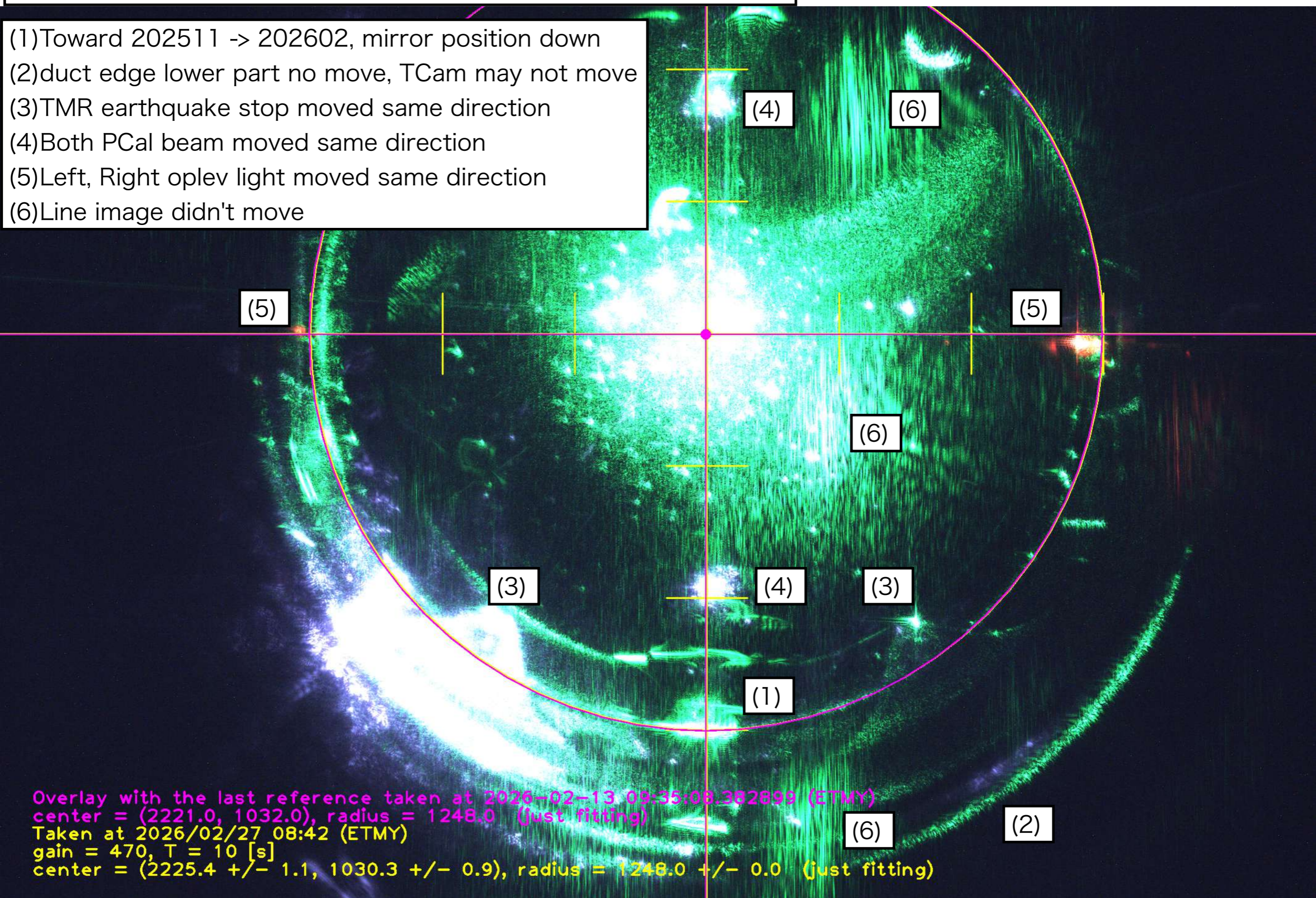
ETMY : 2026/02/27 296K



Overlay with the last reference taken at 2026-02-13 09:35:08.382899 (ETMY)  
center = (2221.0, 1032.0), radius = 1248.0 (just fitting)  
Taken at 2026/02/27 08:42 (ETMY)  
gain = 470, T = 10 [s]  
center = (2225.4 +/- 1.1, 1030.3 +/- 0.9), radius = 1248.0 +/- 0.0 (just fitting)

ETMY : 2026/02/27 296K

- (1) Toward 202511 -> 202602, mirror position down
- (2) duct edge lower part no move, TCam may not move
- (3) TMR earthquake stop moved same direction
- (4) Both PCal beam moved same direction
- (5) Left, Right oplev light moved same direction
- (6) Line image didn't move



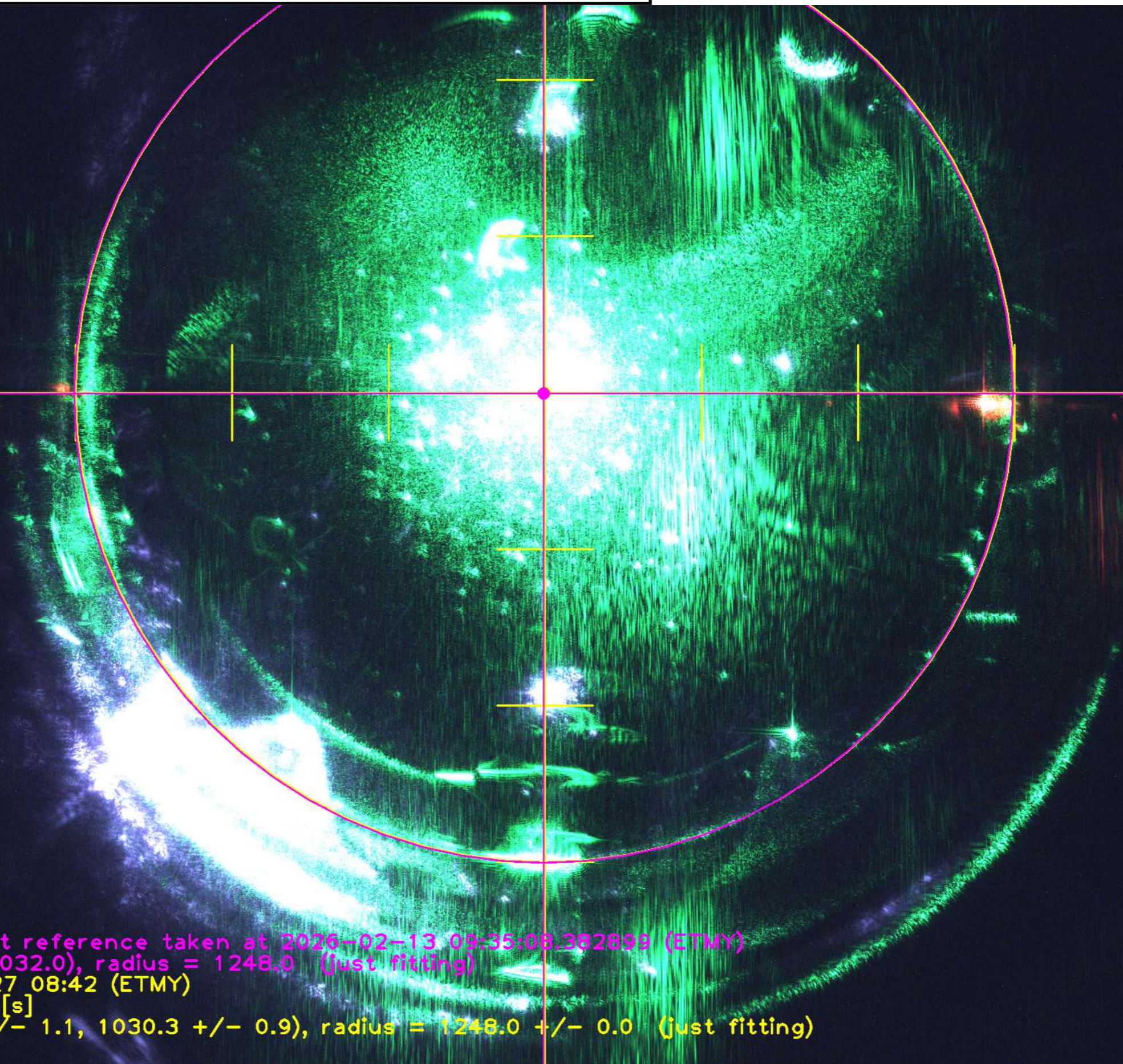
Overlay with the last reference taken at 2026-02-13 09:35:08.382899 (ETMY)  
center = (2221.0, 1032.0), radius = 1248.0 (just fitting)  
Taken at 2026/02/27 08:42 (ETMY)  
gain = 470, T = 10 [s]  
center = (2225.4 +/- 1.1, 1030.3 +/- 0.9), radius = 1248.0 +/- 0.0 (just fitting)

ETMY discussion

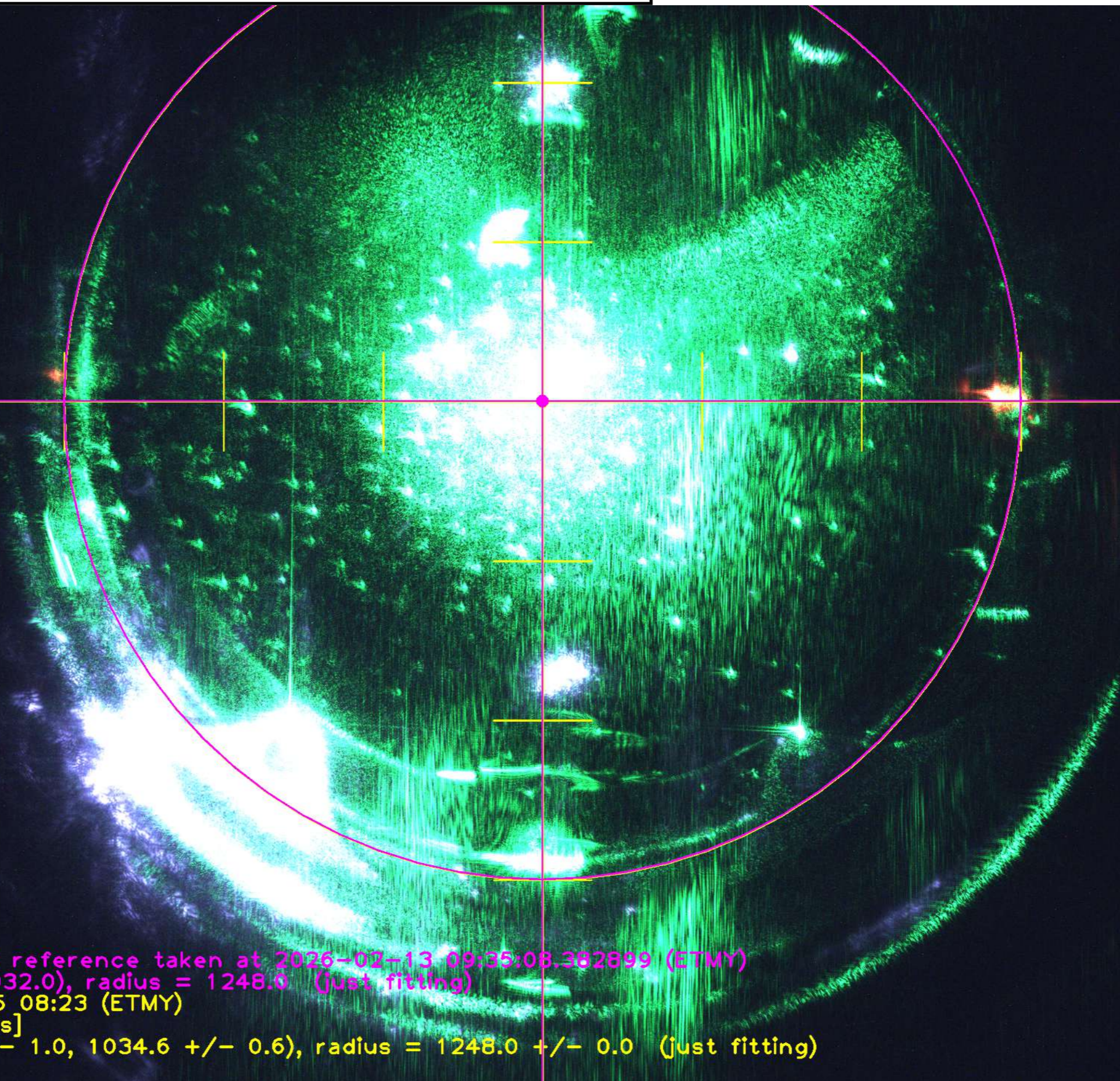
2026/02 -> 2026/04

296 K -> 260 K

ETMY : 2026/02/27 296K

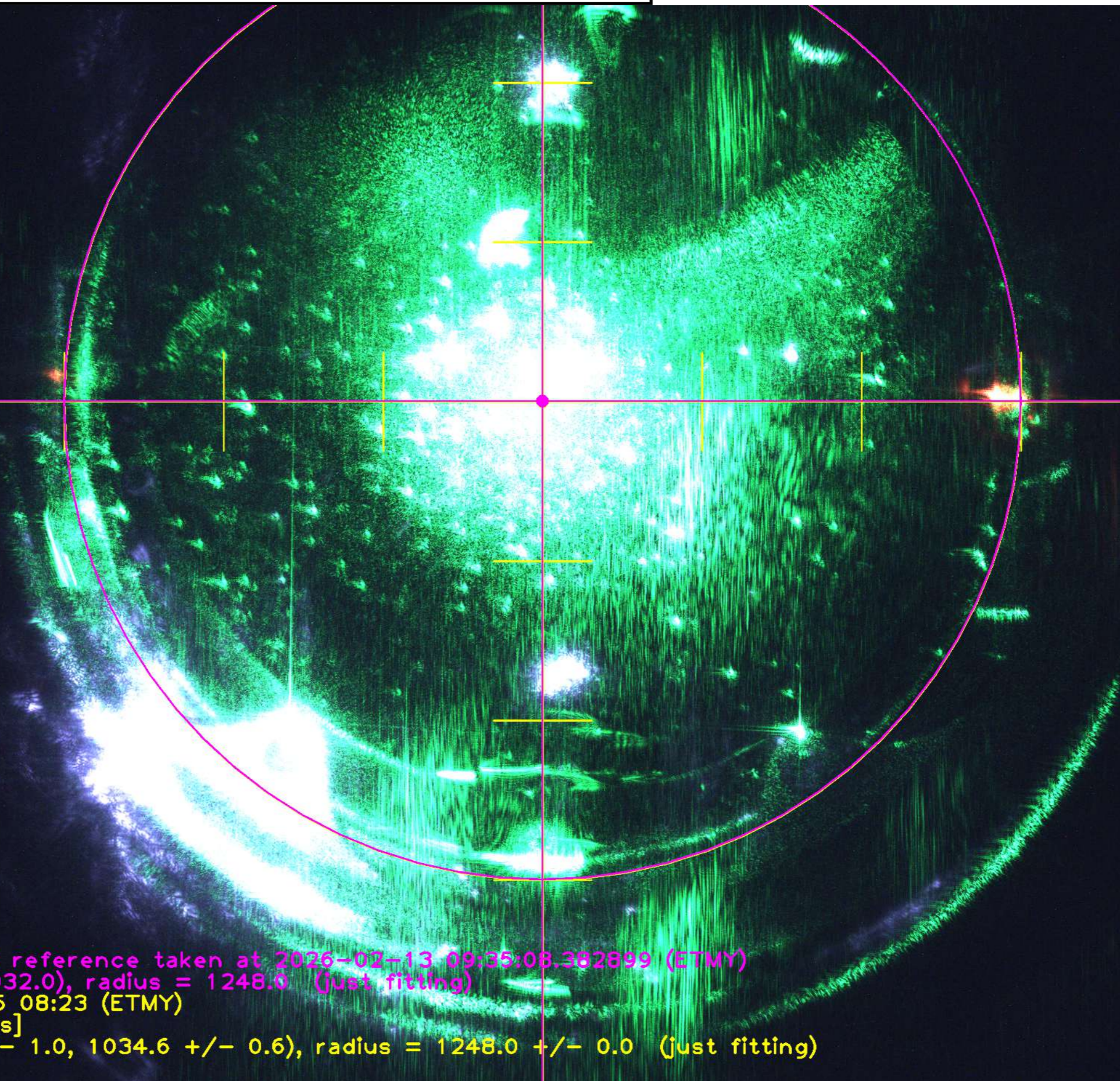


Overlay with the last reference taken at 2026-02-13 09:35:08.382899 (ETMY)  
center = (2221.0, 1032.0), radius = 1248.0 (just fitting)  
Taken at 2026/02/27 08:42 (ETMY)  
gain = 470, T = 10 [s]  
center = (2225.4 +/- 1.1, 1030.3 +/- 0.9), radius = 1248.0 +/- 0.0 (just fitting)



Overlay with the last reference taken at 2026-02-13 09:35:08.382899 (ETMY)  
center = (2221.0, 1032.0), radius = 1248.0 (just fitting)  
Taken at 2026/04/16 08:23 (ETMY)  
gain = 470, T = 10 [s]  
center = (2222.9 +/- 1.0, 1034.6 +/- 0.6), radius = 1248.0 +/- 0.0 (just fitting)

ETMY : 2026/04/16 260K



Overlay with the last reference taken at 2026-02-13 09:35:08.382899 (ETMY)  
center = (2221.0, 1032.0), radius = 1248.0 (just fitting)  
Taken at 2026/04/16 08:23 (ETMY)  
gain = 470, T = 10 [s]  
center = (2222.9 +/- 1.0, 1034.6 +/- 0.6), radius = 1248.0 +/- 0.0 (just fitting)