

Klog

Chiaki Hirose

Record Time Series of working

IMMT2 and PR2 ADSOFF

↓ **1** (Observed WFS DC offsets for 10 minutes)

IY and EY OLDAMP OFF

↓ **2** (Prepared to turn on ASC)

ASC YAW ON

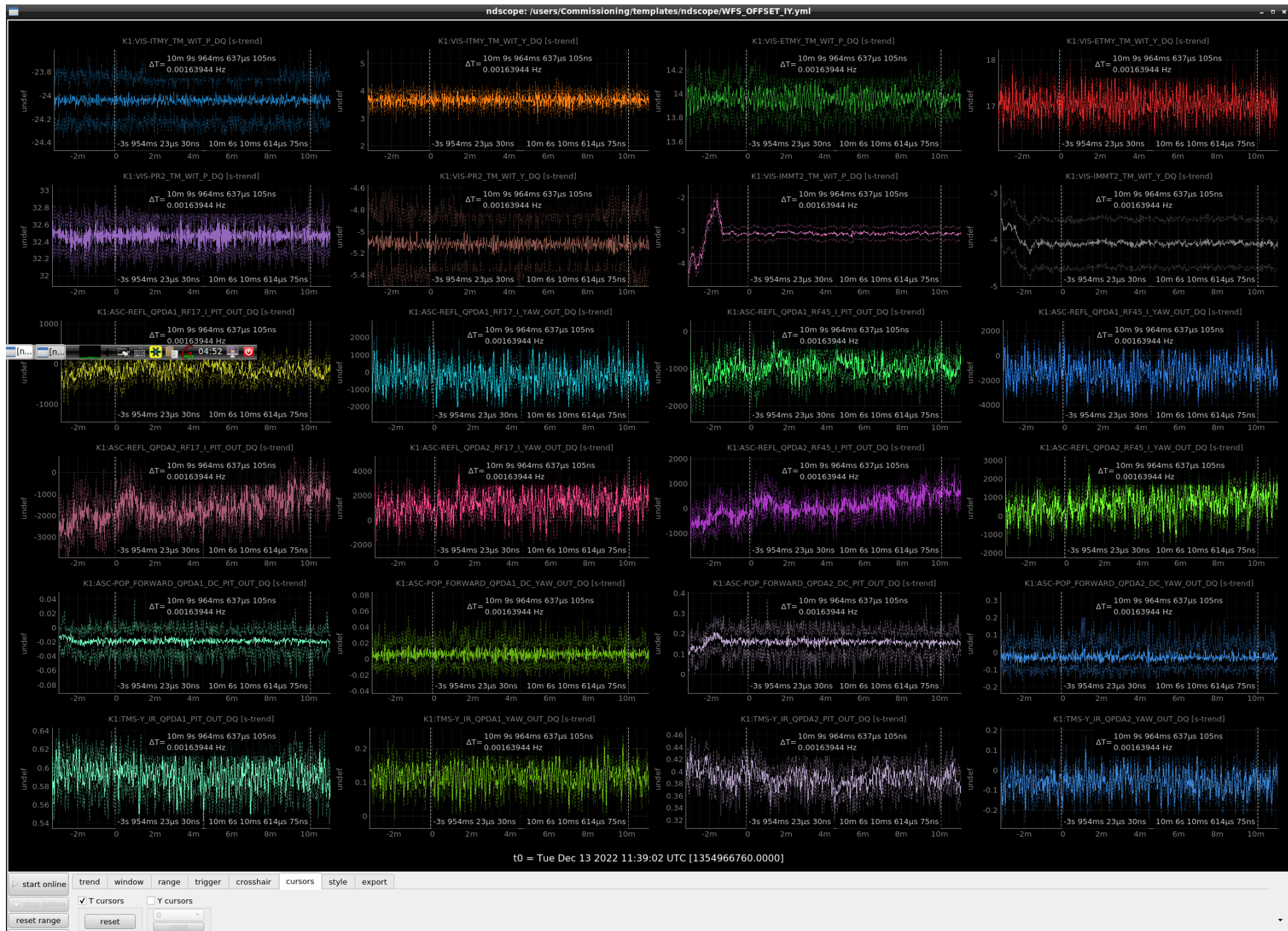
↓ **3** (Adjusted PIT filter gain)

ASC PIT ON(Put in appropriate PIT filter gain)

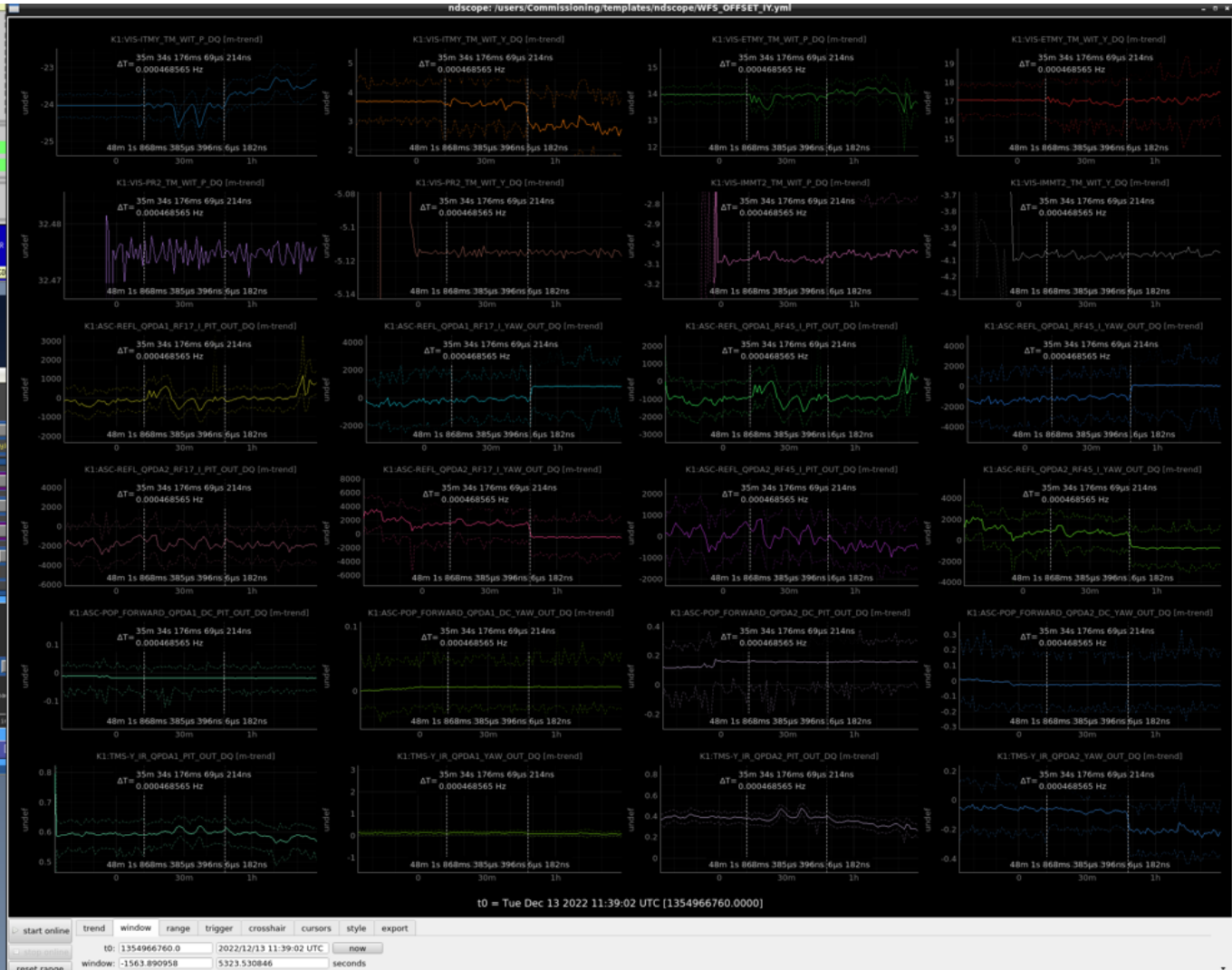
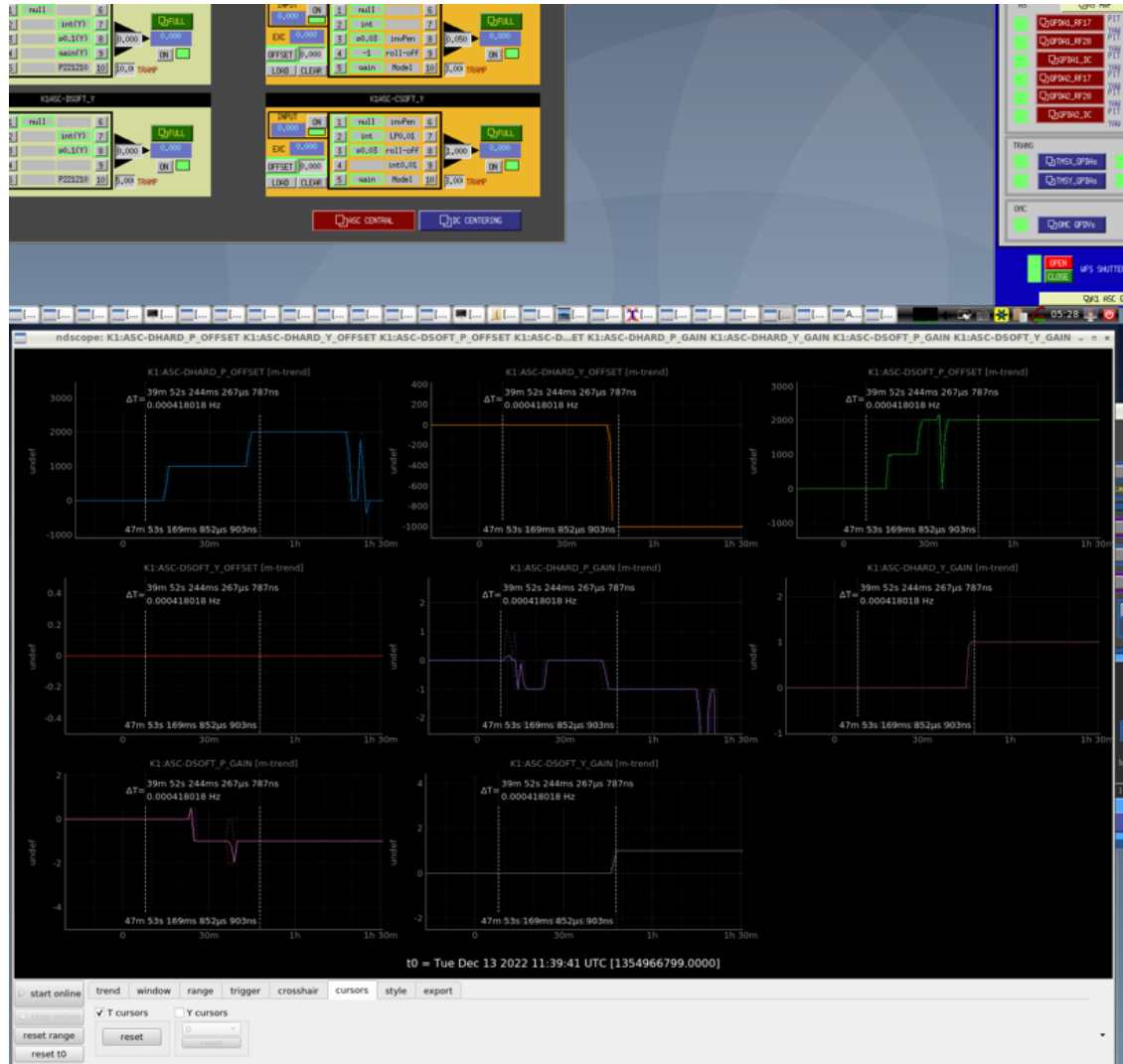
↓ **4** (Adjusted detail sometimes)

Work is finished.

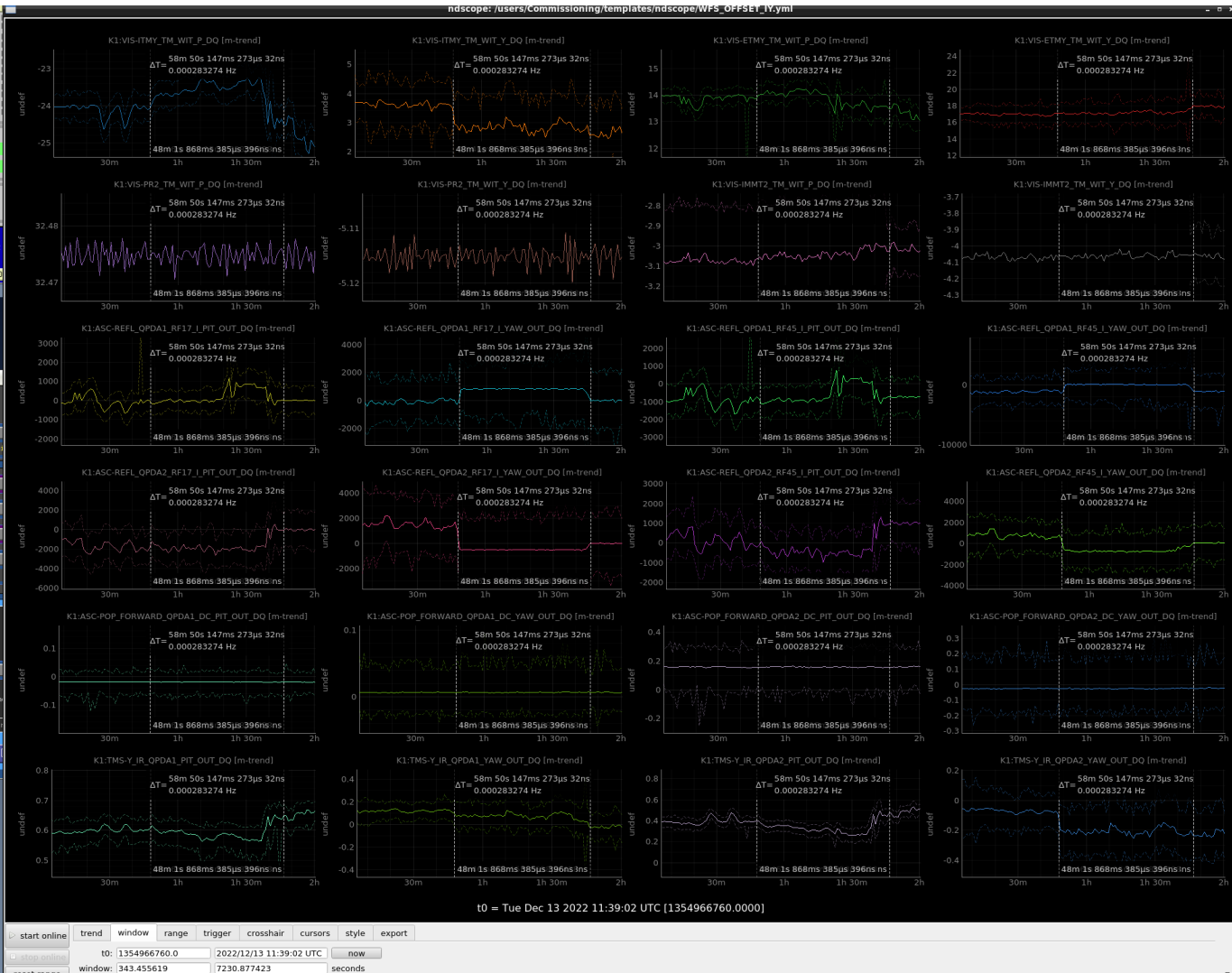
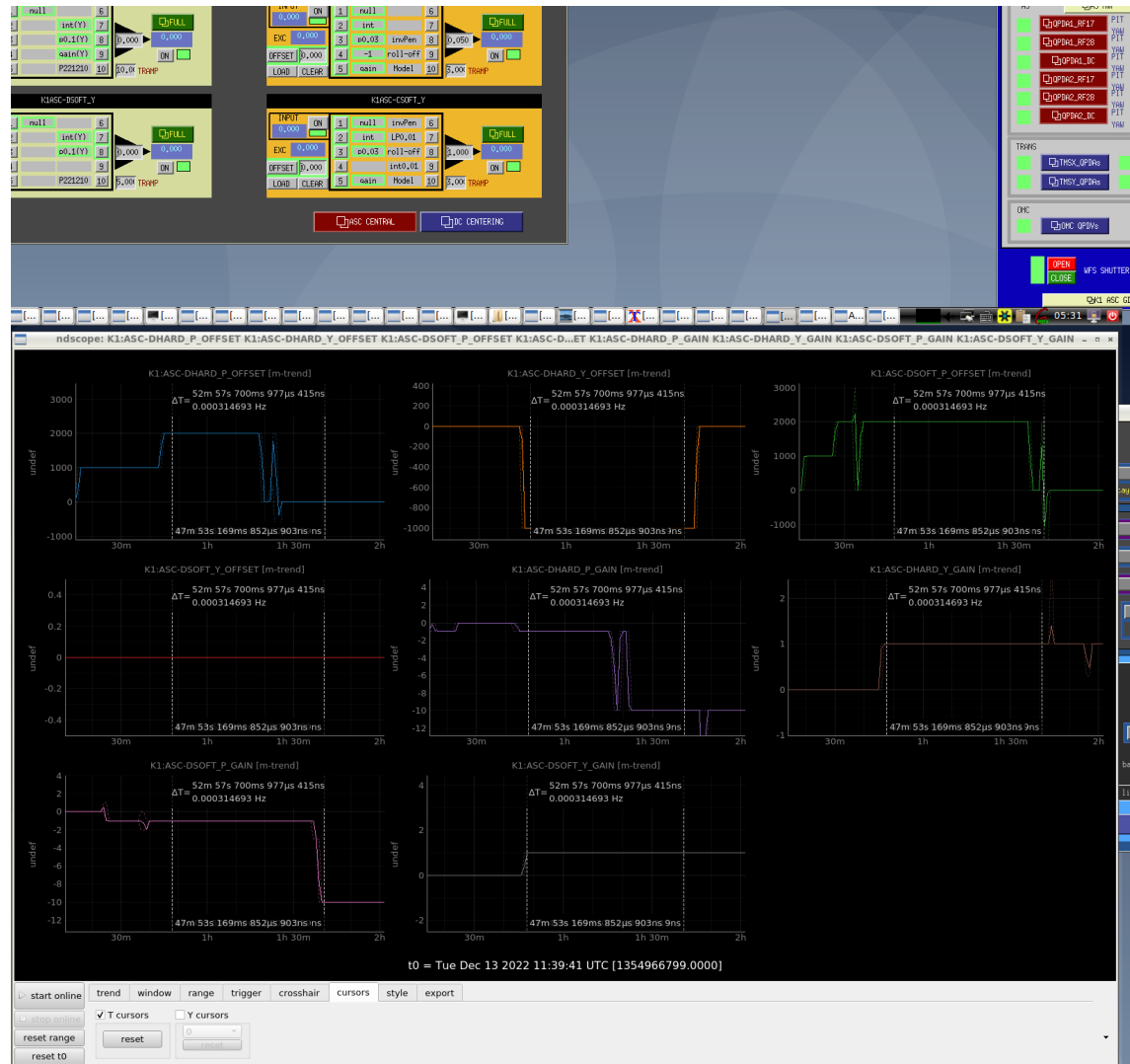
1



2



3



htly larger because the ASC has to compensate.
consider feeding back to MI instead of TM to increase the range.

r.txt

[[Download / Get URL](#)] - Uploaded successfully

ng [[Download / Get URL](#)] - Uploaded successfully

