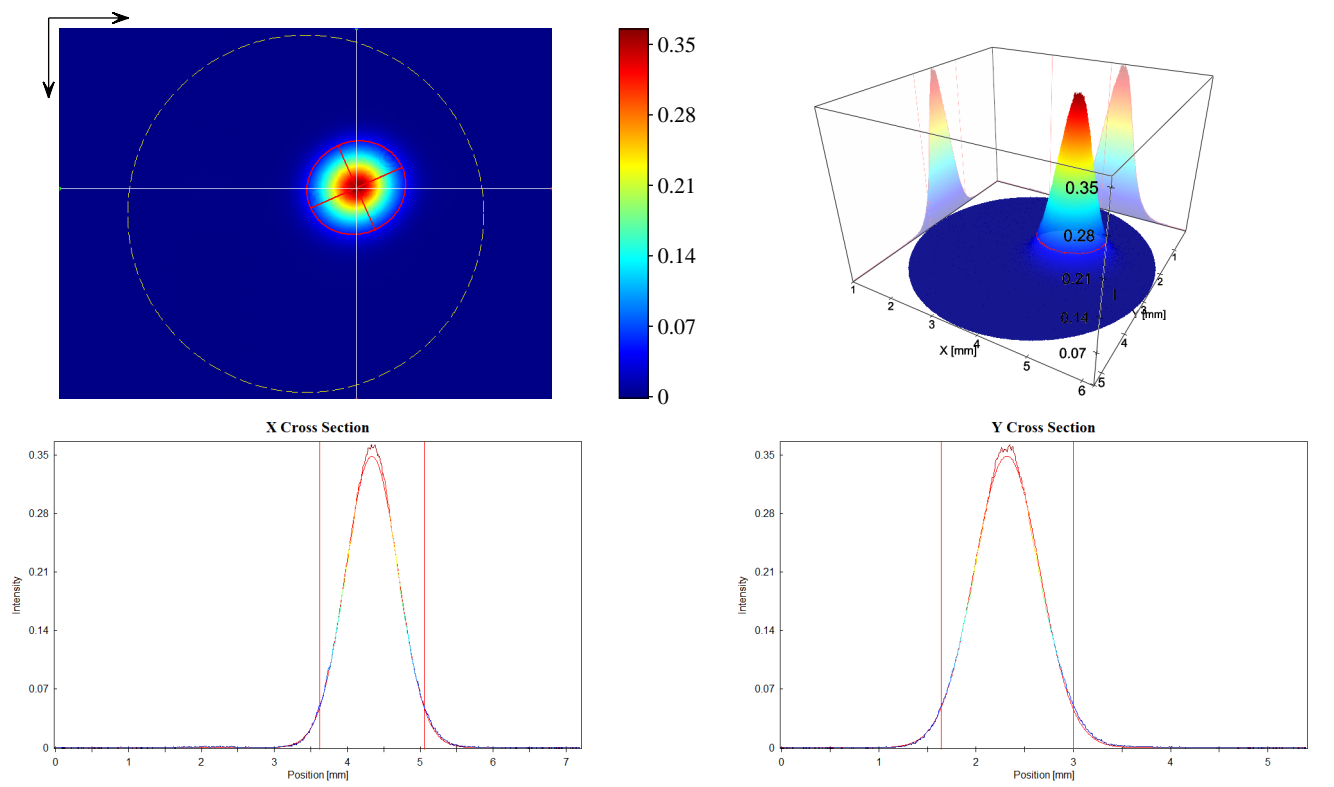


| | | |
|---|--|---|
| User: Camera: CinCam CMOS 1203 Serial: 1203-U2-0421-0092 Accessory Type: plain Date: 2022/07/07 Type: Single Measurement | Type: Wavelength: 320 nm Manufacturer: Model: Serial Number: Polarization: Output Power: | Beam Attenuator: Beam Splitter: Focusing Element: Other Optical Units: |
| Frames: 100 Frequency: Pixel Size: 1600 x 1200 Comment: | Operation Mode: CW Pulse Energy: Pulse Width: Pulse Frequency: M^2: Comment: | Laser Temp.: Ambient Temp.: Humidity: |
| Exposure Time: 10.00 ms Gain: 1.00 x Brightness: invalid | | Background: yes Flat Field: no Angular Response: no Baseline: yes Linearity: no |



| | | |
|-------------------------|---|--|
| Statistic | Gauss-Fit (D 4.00 Sigma ~ 1/e^2) | |
| Number of Pixel: 421568 | Exponent: 2.00 | |
| Power: 1.337E+4 | Centroid x: 4.338 mm | |
| Peak: 0.3653 | Centroid y: 2.317 mm | |
| Peak Pos x: 4.302 mm | --- Width Lab --- | |
| Peak Pos y: 2.353 mm | Width x: 1.442 mm | |
| SNR: 63.3 dB | Width y: 1.360 mm | |
| | --- Width Beam --- | |
| | Width Major: 1.461 mm | |
| | Width Minor: 1.339 mm | |
| | Azimuth Angle: -23.89 deg | |
| | Ellipticity: 0.916 | |
| | Eccentricity: 0.401 | |
| | --- | |
| | Cross-Sect. Area: 1.536 mm^2 | |
| | Power Fraction: 86.40 % | |
| | GFI: 0.999 | |
| | Correlation: 0.949 | |