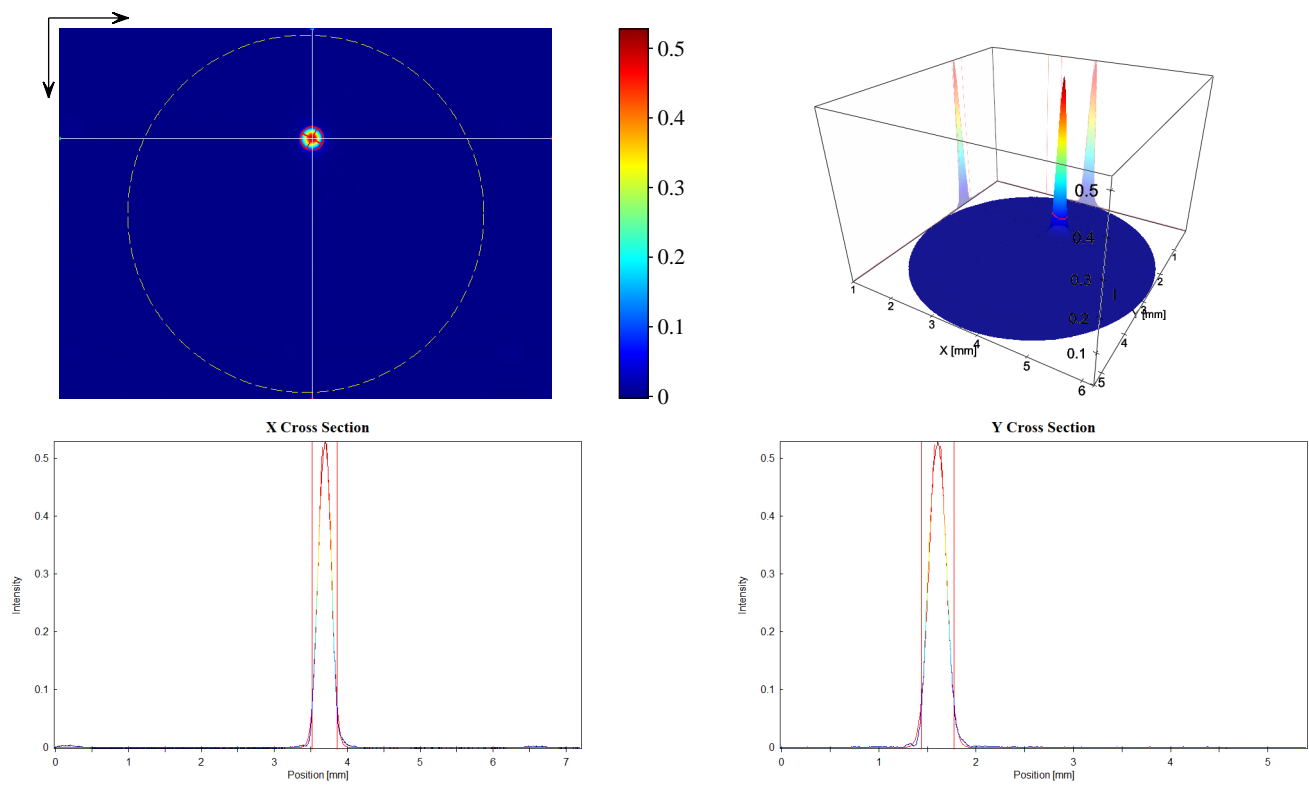


User: Camera: CinCam CMOS 1203 Serial: 1203-U2-0421-0092 Accessory Type: plain Date: 2022/07/07 Type: Single Measurement	Type: Wavelength: 320 nm Manufacturer: Model: Serial Number: Polarization: Output Power:	Beam Attenuator: Beam Splitter: Focusing Element: Other Optical Units:
Frames: 100 Frequency: Pixel Size: 1600 x 1200 Comment:	Operation Mode: CW Pulse Energy: Pulse Width: Pulse Frequency: M^2: Comment:	Laser Temp.: Ambient Temp.: Humidity:
Exposure Time: 450 us Gain: 1.00 x Brightness: invalid		Background: yes Flat Field: no Angular Response: no Baseline: yes Linearity: no



Statistic	Gauss-Fit (D 4.00 Sigma ~ 1/e^2)
Number of Pixel: 22512	Exponent: 2.00
Power: 1263.	Centroid x: 3.689 mm
Peak: 0.5277	Centroid y: 1.604 mm
Peak Pos x: 3.695 mm	--- Width Lab ---
Peak Pos y: 1.602 mm	Width x: 0.3424 mm
SNR: 61.4 dB	Width y: 0.3403 mm
	--- Width Beam ---
	Width Major: 0.3432 mm
	Width Minor: 0.3394 mm
	Azimuth Angle: 28.55 deg
	Ellipticity: 0.989
	Eccentricity: 0.148

	Cross-Sect. Area: 0.09150 mm^2
	Power Fraction: 87.13 %
	GFI: 0.996
	Correlation: 0.665