

User:
 Camera: CinCam CMOS 1203
 Serial: 1203-U2-0421-0092
 Accessory Type: plain
 Date: 2022/07/07
 Type: Single Measurement

Frames: 100
 Frequency:
 Pixel Size: 1600 x 1200
 Comment:

Exposure Time: 4.500 ms
 Gain: 1.00 x
 Brightness: invalid

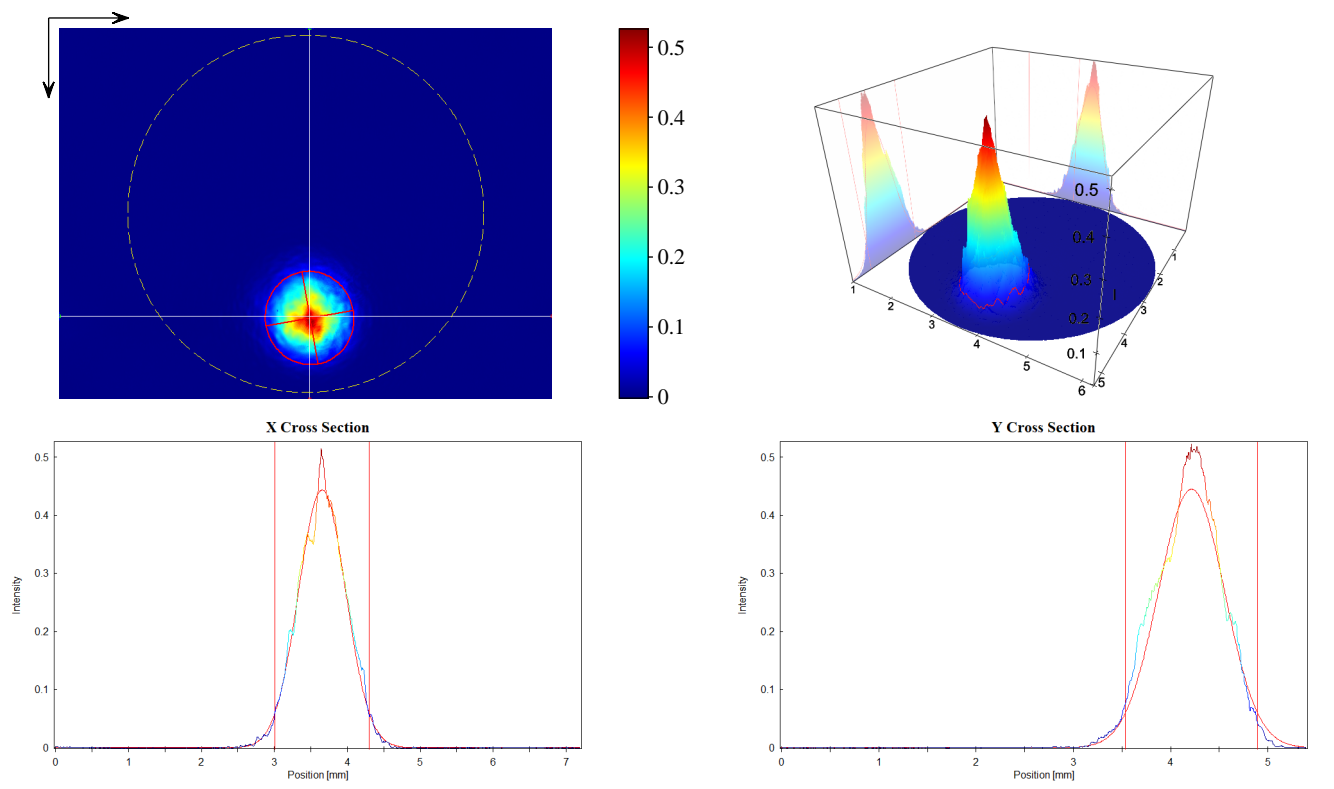
Type:
 Wavelength: 660 nm
 Manufacturer:
 Model:
 Serial Number:
 Polarization:
 Output Power:

Operation Mode: CW
 Pulse Energy:
 Pulse Width:
 Pulse Frequency:
 M^2:
 Comment:

Beam Attenuator:
 Beam Splitter:
 Focusing Element:
 Other Optical Units:

Laser Temp.:
 Ambient Temp.:
 Humidity:

Background: yes
 Flat Field: no
 Angular Response: no
 Baseline: yes
 Linearity: no



Statistic

Number of Pixel: 177488
 Power: 1.490E+4
 Peak: 0.5261
 Peak Pos x: 3.645 mm
 Peak Pos y: 4.216 mm
 SNR: 64.0 dB

Gauss-Fit (D 4.00 Sigma ~ 1/e^2)

Exponent: 2.00
 Centroid x: 3.655 mm
 Centroid y: 4.215 mm
 --- Width Lab ---
 Width x: 1.294 mm
 Width y: 1.358 mm
 --- Width Beam ---
 Width Major: 1.360 mm
 Width Minor: 1.292 mm
 Azimuth Angle: 80.10 deg
 Ellipticity: 0.950
 Eccentricity: 0.312

 Cross-Sect. Area: 1.380 mm^2
 Power Fraction: 87.36 %
 GFI: 0.983
 Correlation: 0.841