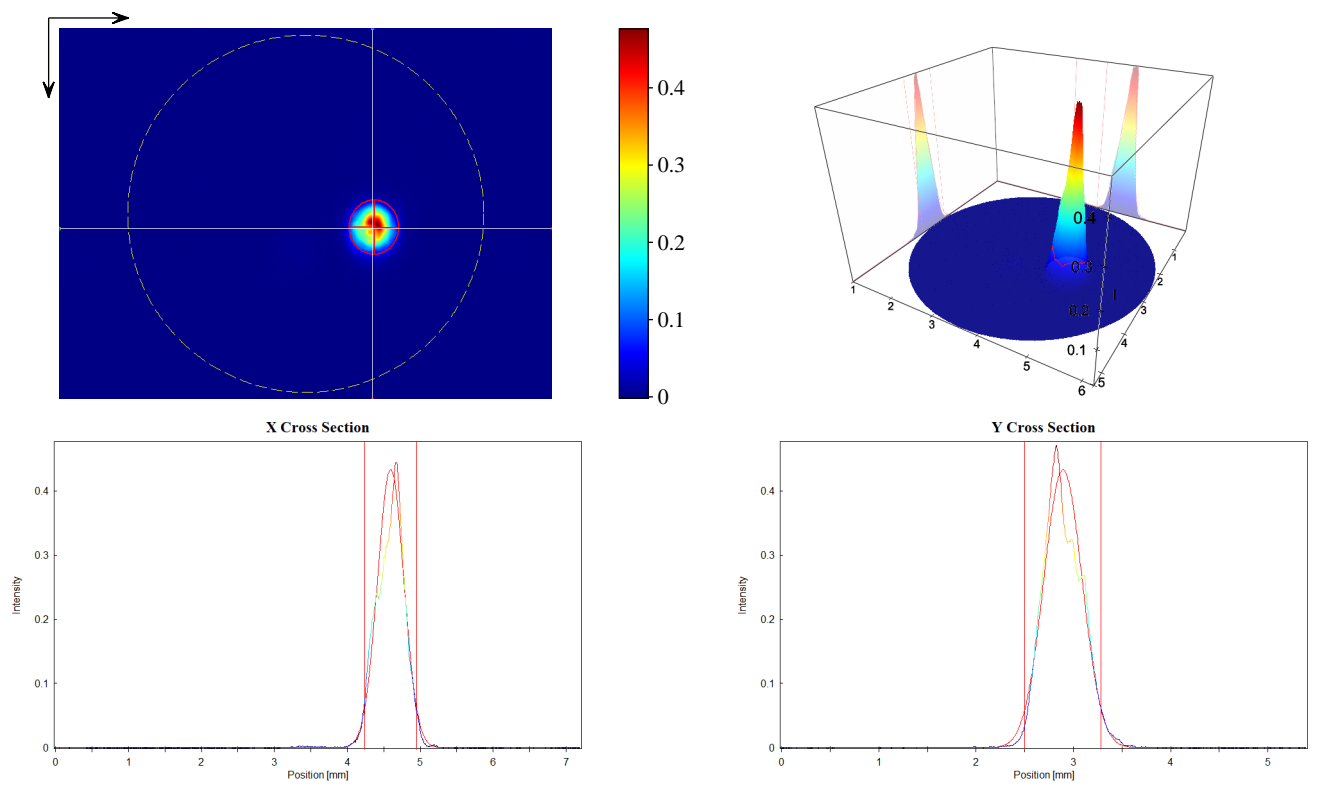


User: Camera: CinCam CMOS 1203 Serial: 1203-U2-0421-0092 Accessory Type: plain Date: 2022/07/07 Type: Single Measurement	Type: Wavelength: 660 nm Manufacturer: Model: Serial Number: Polarization: Output Power:	Beam Attenuator: Beam Splitter: Focusing Element: Other Optical Units:
Frames: 100 Frequency: Pixel Size: 1600 x 1200 Comment:	Operation Mode: CW Pulse Energy: Pulse Width: Pulse Frequency: M^2: Comment:	Laser Temp.: Ambient Temp.: Humidity:
Exposure Time: 1.000 ms Gain: 1.00 x Brightness: invalid		Background: yes Flat Field: no Angular Response: no Baseline: yes Linearity: no



<b>Statistic</b>	<b>Gauss-Fit ( D 4.00 Sigma ~ 1/e^2 )</b>	
Number of Pixel: 113664	Exponent: 2.00	
Power: 4843.	Centroid x: 4.595 mm	
Peak: 0.4762	Centroid y: 2.893 mm	
Peak Pos x: 4.608 mm	--- Width Lab ---	
Peak Pos y: 2.849 mm	Width x: 0.7222 mm	
SNR: 64.5 dB	Width y: 0.7883 mm	
	--- Width Beam ---	
	Width Major: 0.7884 mm	
	Width Minor: 0.7222 mm	
	Azimuth Angle: -88.86 deg	
	Ellipticity: 0.916	
	Eccentricity: 0.401	
	---	
	Cross-Sect. Area: 0.4472 mm^2	
	Power Fraction: 86.97 %	
	GFI: 0.980	
	Correlation: 0.787	