

User:
 Camera: CinCam CMOS 1203
 Serial: 1203-U2-0421-0092
 Accessory Type: plain
 Date: 2022/05/16
 Type: Single Measurement

Frames: 100
 Frequency:
 Pixel Size: 1600 x 1200
 Comment:

Exposure Time: 100 us
 Gain: 1.00 x
 Brightness: invalid

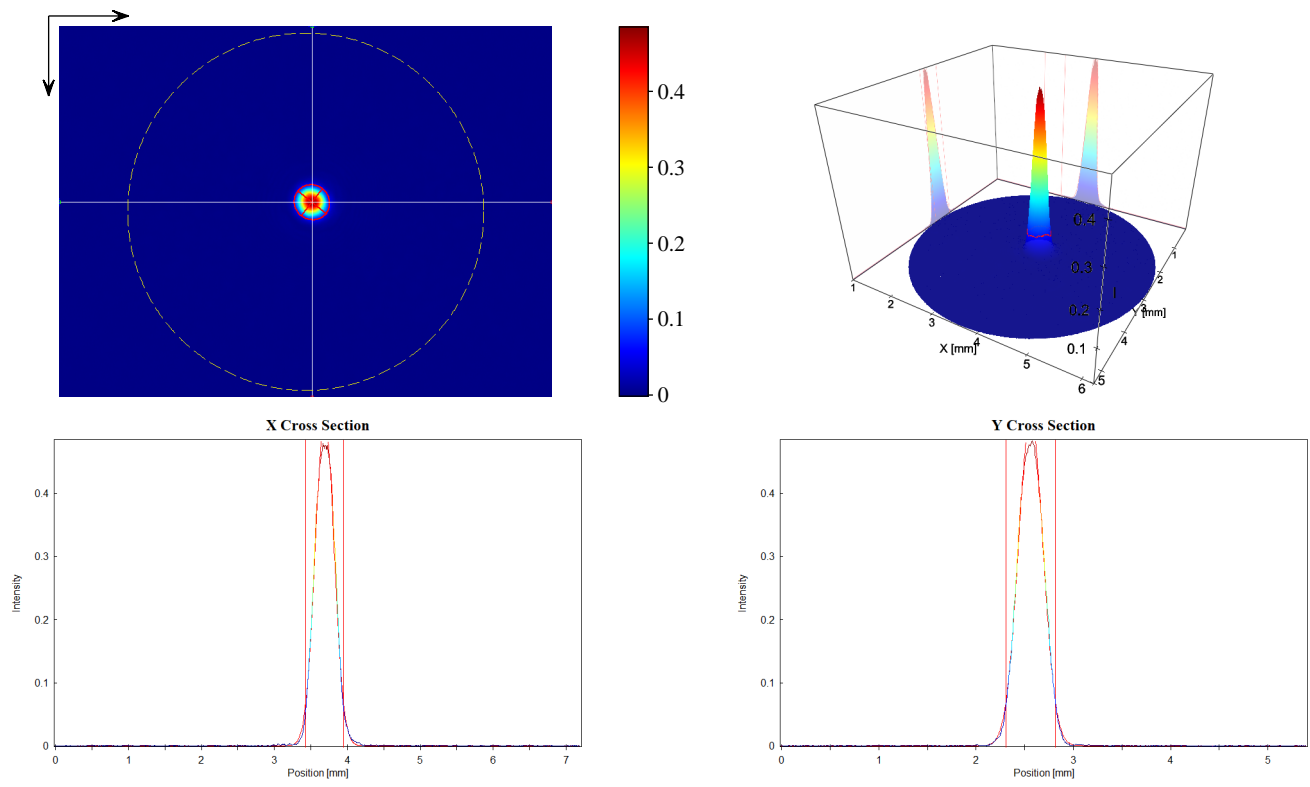
Type:
 Wavelength:
 Manufacturer:
 Model:
 Serial Number:
 Polarization:
 Output Power:

Operation Mode: CW
 Pulse Energy:
 Pulse Width:
 Pulse Frequency:
 M^2:
 Comment:

Beam Attenuator:
 Beam Splitter:
 Focusing Element:
 Other Optical Units:

Laser Temp.:
 Ambient Temp.:
 Humidity:

Background: yes
 Flat Field: no
 Angular Response: no
 Baseline: yes
 Linearity: no



Statistic

Number of Pixel: 91184
 Power: 2679.
 Peak: 0.4848
 Peak Pos x: 3.681 mm
 Peak Pos y: 2.583 mm
 SNR: 64.8 dB

Gauss-Fit (D 4.00 Sigma ~ 1/e^2)

Exponent: 2.00
 Centroid x: 3.689 mm
 Centroid y: 2.561 mm
 --- Width Lab ---
 Width x: 0.5166 mm
 Width y: 0.5099 mm
 --- Width Beam ---
 Width Major: 0.5264 mm
 Width Minor: 0.4998 mm
 Azimuth Angle: 37.72 deg
 Ellipticity: 0.950
 Eccentricity: 0.314

 Cross-Sect. Area: 0.2066 mm^2
 Power Fraction: 87.12 %
 GFI: 0.997
 Correlation: 0.808