

User:
 Camera: CinCam CMOS 1203
 Serial: 1203-U2-0421-0092
 Accessory Type: plain
 Date: 2022/02/22
 Type: Single Measurement

Type:
 Wavelength:
 Manufacturer:
 Model:
 Serial Number:
 Polarization:
 Output Power:

Beam Attenuator:
 Beam Splitter:
 Focusing Element:
 Other Optical Units:

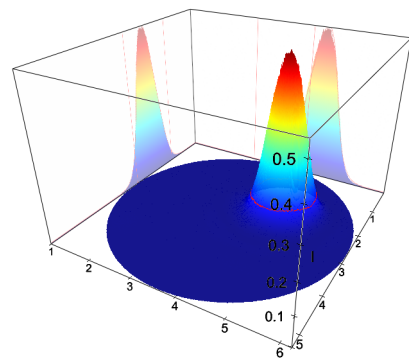
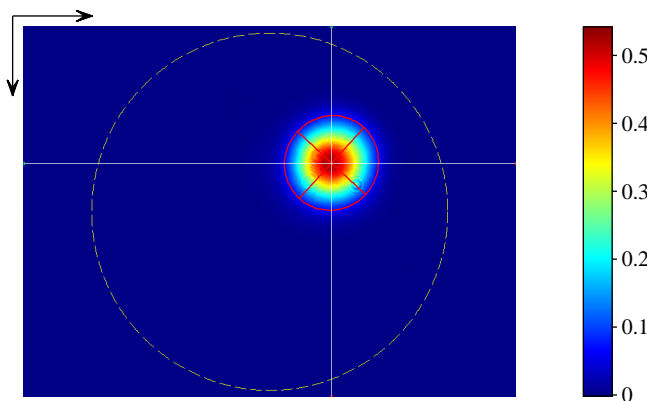
Frames: 100
 Frequency:
 Pixel Size: 1600 x 1200
 Comment:

Operation Mode: CW
 Pulse Energy:
 Pulse Width:
 Pulse Frequency:
 M²:
 Comment:

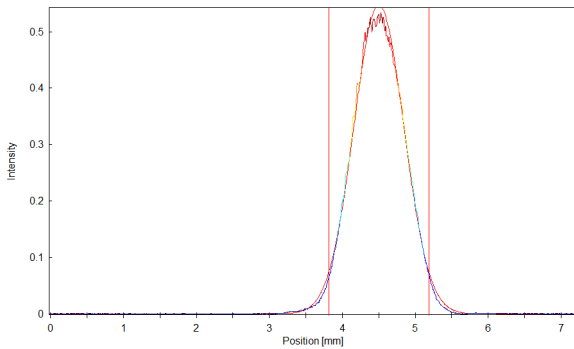
Laser Temp.:
 Ambient Temp.:
 Humidity:

Exposure Time: 700 us
 Gain: 1.00 x
 Brightness: invalid

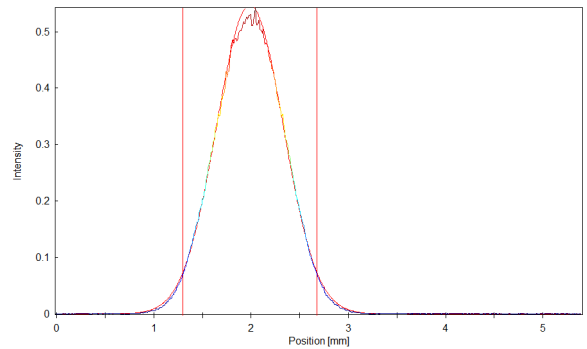
Background: yes
 Flat Field: no
 Angular Response: no
 Baseline: yes
 Linearity: no



X Cross Section



Y Cross Section



Statistic

Number of Pixel: 243948
 Power: 1.970E+4
 Peak: 0.5418
 Peak Pos x: 4.500 mm
 Peak Pos y: 2.043 mm
 SNR: 65.5 dB

Gauss-Fit (D 4.00 Sigma ~ 1/e²)

Exponent: 2.00
 Centroid x: 4.502 mm
 Centroid y: 1.987 mm
 --- Width Lab ---
 Width x: 1.374 mm
 Width y: 1.377 mm
 --- Width Beam ---
 Width Major: 1.398 mm
 Width Minor: 1.352 mm
 Azimuth Angle: -47.27 deg
 Ellipticity: 0.968
 Eccentricity: 0.253

 Cross-Sect. Area: 1.485 mm²
 Power Fraction: 87.12 %
 GFI: 0.998
 Correlation: 0.928