

PITCH

Black : Previous measurement
Red: Current measurement

	M Ce_pitch	M Co_pitch	M Ci_pitch	COM_P	DIF_P	IP2_P
REFLQPD1 (-63deg)	3.554e-06 6.17006e-06	1.0018e-06 1.50507e-06	-3.767e-06 -6.0098e-06	-7.4611e-6 -4.40866e-6	-10.183e-6 -7.19863e-6	79.571 (cts/V)
REFLQPD2 (28deg)	5.0209e-06 5.34574e-06	3.16797e-07 3.74309e-07	3.73e-06 9.40001e-06	12.344e-6 9.60403e-6	11.5878e-6 8.5976e-6	48.8647 (cts/V)
MCeQPD1 (-34deg)	-0.0263 -0.02508	-0.0122 -0.1189	-0.23387 -0.204	-0.216323 -0.215276	-0.193038 -0.191502	
MCeQPD2 (55deg)	0.07762 0.074773	0.003162 0.003164	0.06647 0.0615	0.0611429 0.0637492	0.0553447 0.0582743	
IMMT1QPD 1	-0.08709 -0.0813	-0.002238 -0.00217	-0.2383 -0.201	-0.203804 -0.202698	-0.199028 -0.197964	

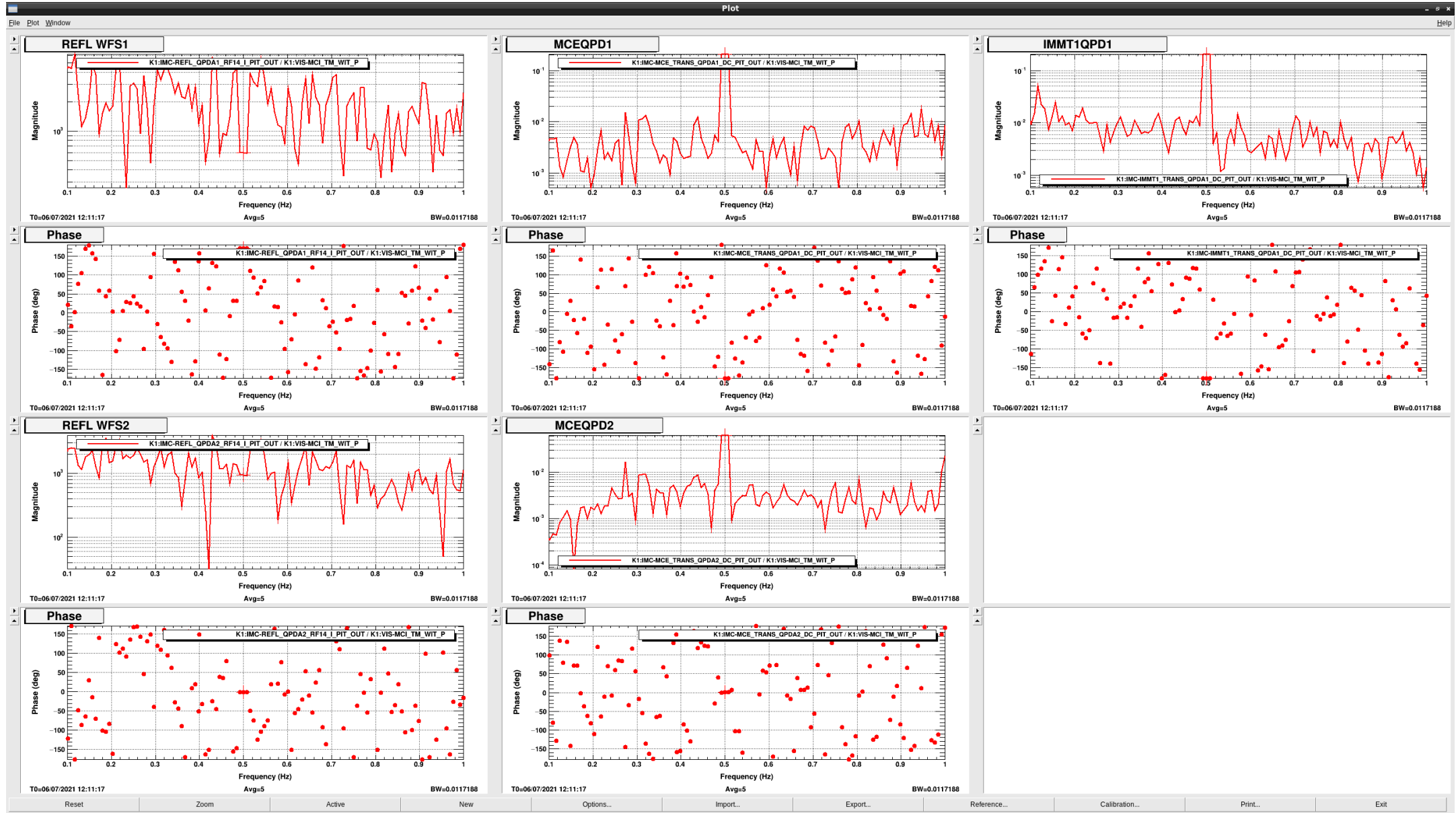
REFL_RFQPD : [W/rad] → signal chane : 10e-7[cts/W] <https://klog.icrr.u-tokyo.ac.jp/osl/?r=3987>

TRANS(MCe, IMMT1)_DCQPD : [cts/rad]

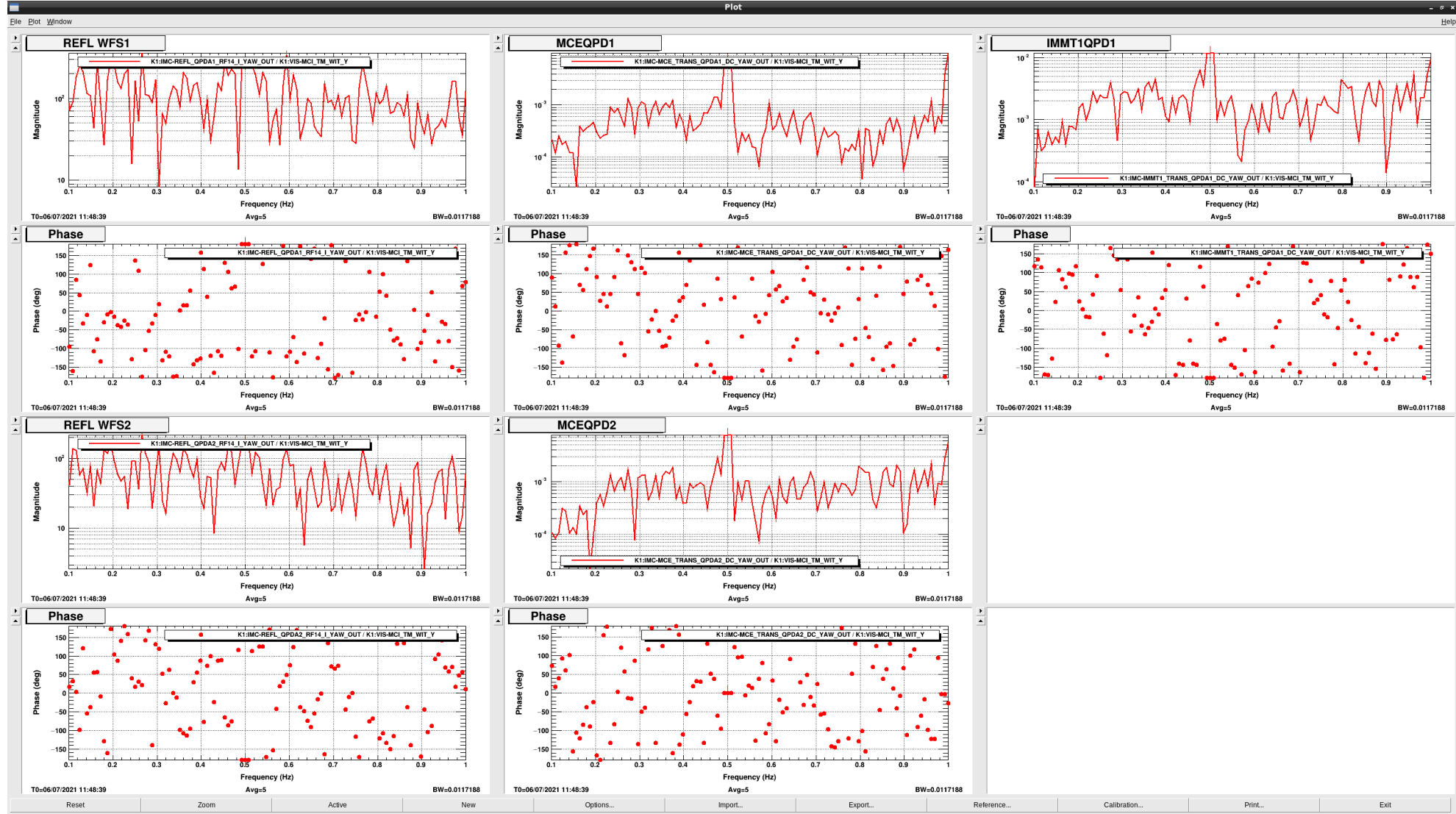
YAW

[W/rad]	M Ce_yaw	M Co_yaw	M Ci_yaw	COM yaw	DIF yaw	IP2 yaw
REFLQPD1 (-63deg)	32.3e-07 3.08937e-06	3.216e-07 5.67318e-07	-9.258e-07 -2.6581e-06	-24.1998e-7 -20.1162e-7	-25.704e-7 1.25155e-06	20.676 (cts/V)
REFLQPD2 (28deg)	5.135e-07 4.22297e-07	2.0607e-06 2.48917e-06	-6.546e-07 -1.65318e-06	-26.7141e-7 8.30434e-7	5.55819e-7 -5.95334e-07	-13.5895 (cts/V)
M CeQPD1 (-34deg)	0.0252 0.0239	0.01340 0.0125	-0.00780 -0.00713	-0.019978 0.00549894	0.00536082 0.0003289	
M CeQPD2 (55deg)	0.0198 0.01958	-0.0159 -0.015	0.008064 0.0076	0.0235806 -0.00766921	-0.00786392 -0.00056	
IMMT1QPD1	0.0138 -0.01285	0.04282 0.039	-0.012965 -0.0117	-0.0527213 0.0278322	0.0280605 0.001336	

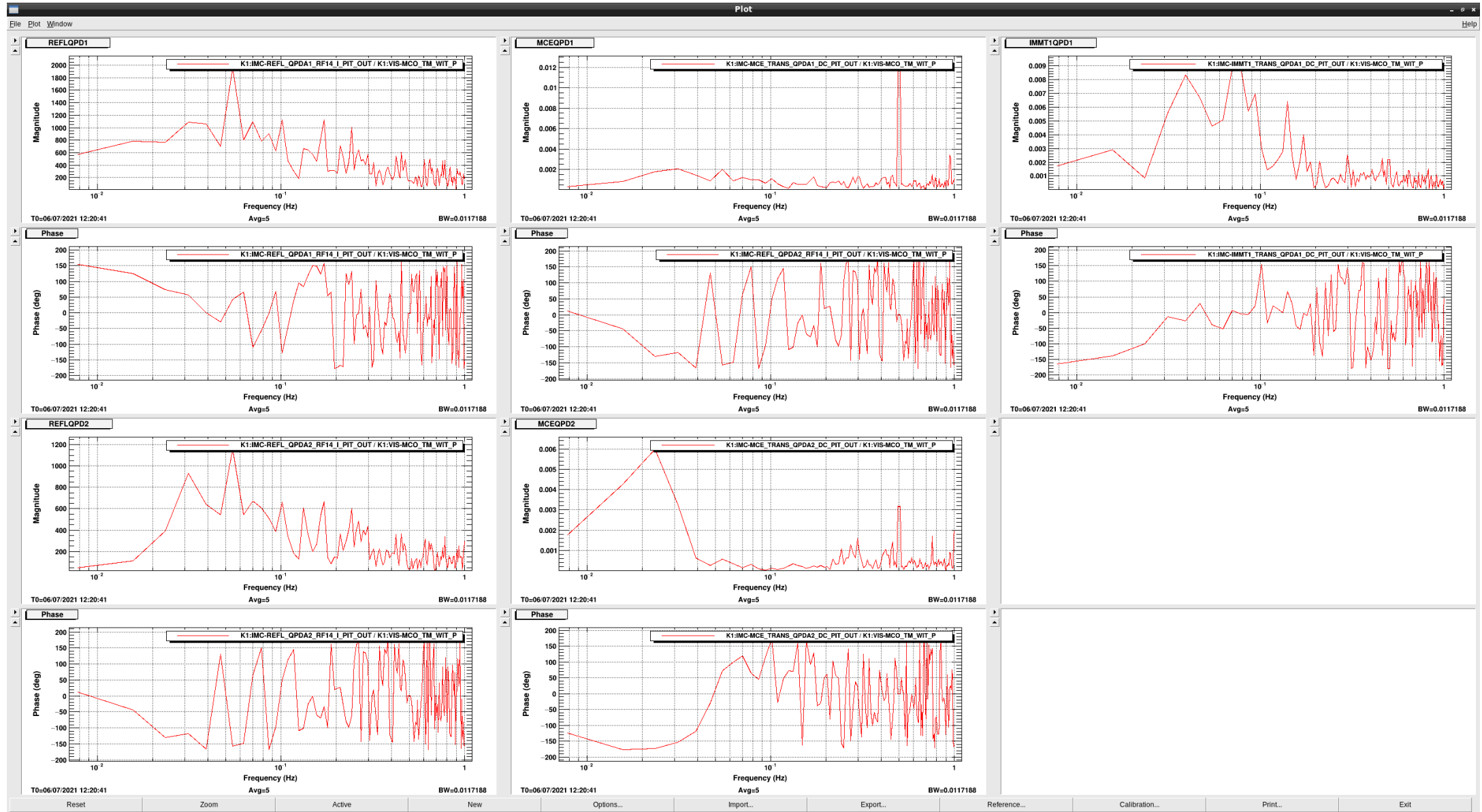
MCI_pitch

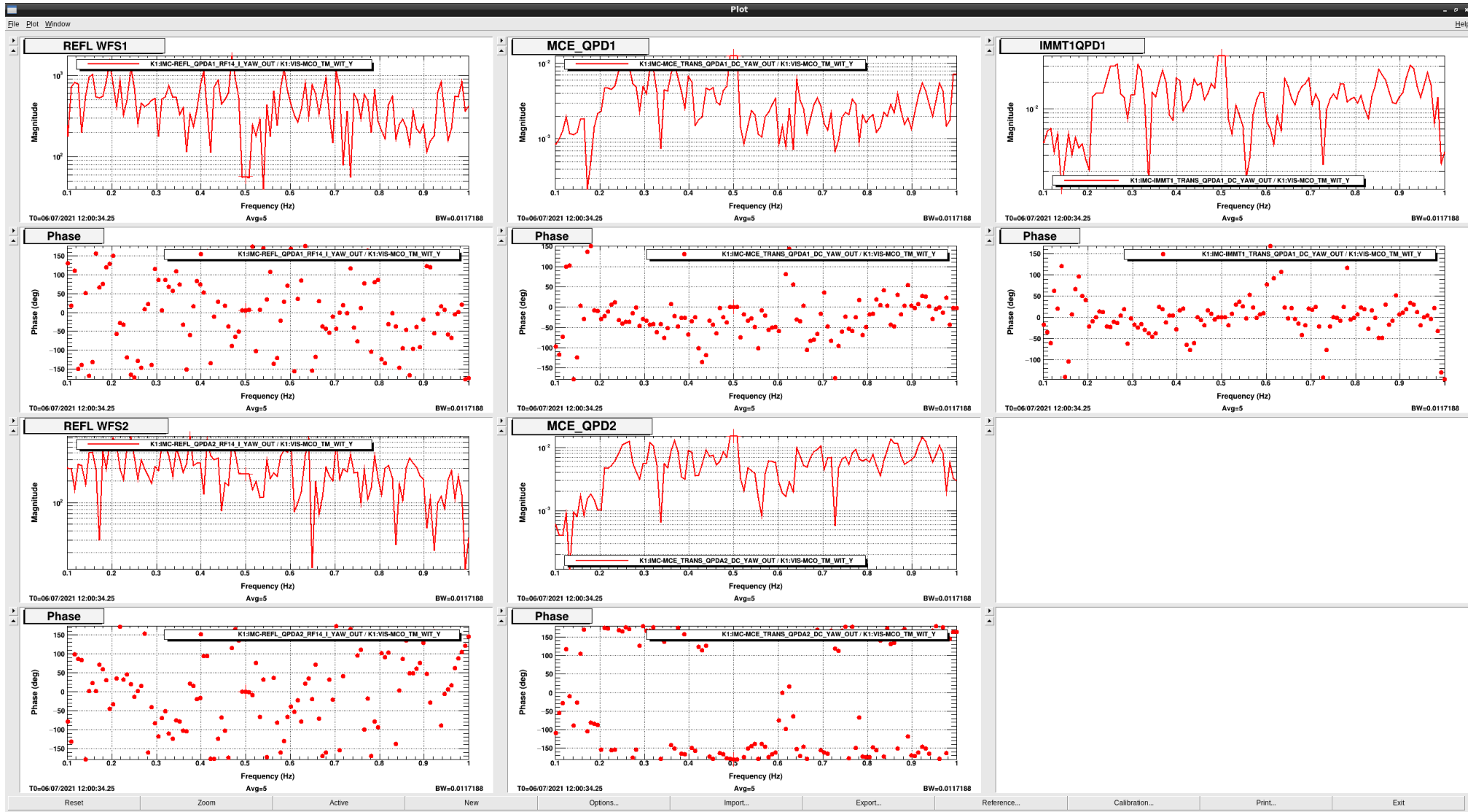


MCI_yaw

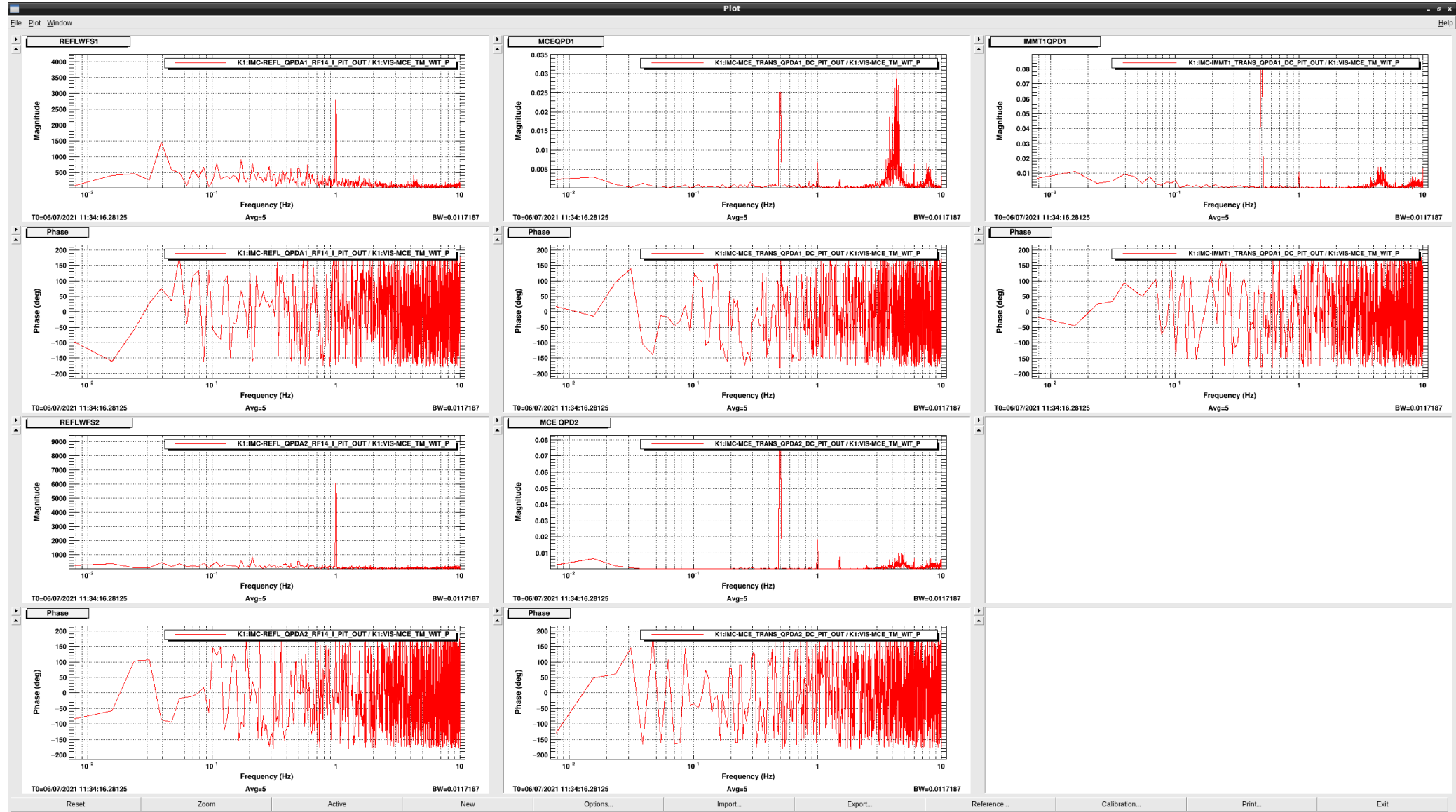


MCO_pitch





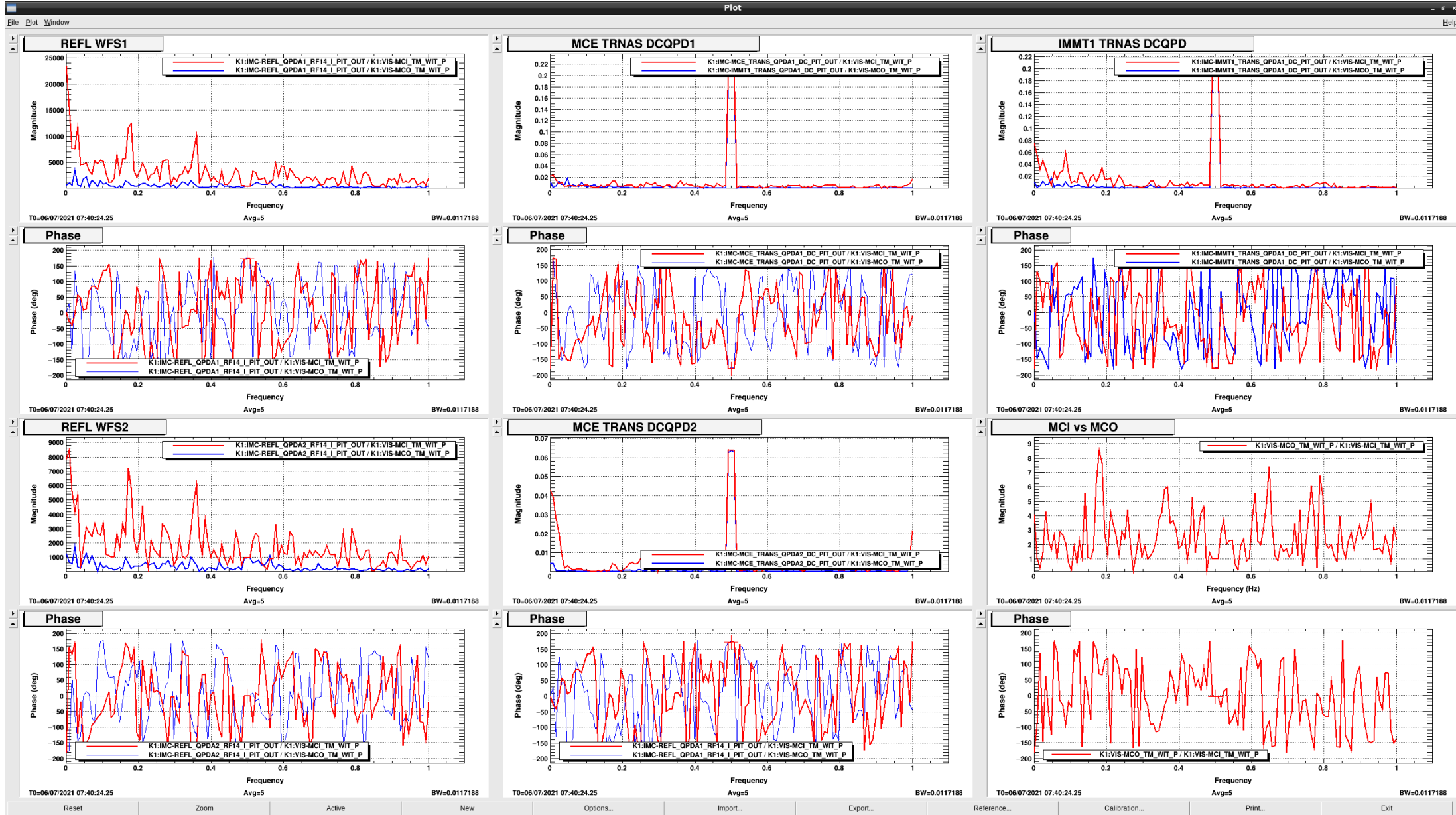
MCE_pitch



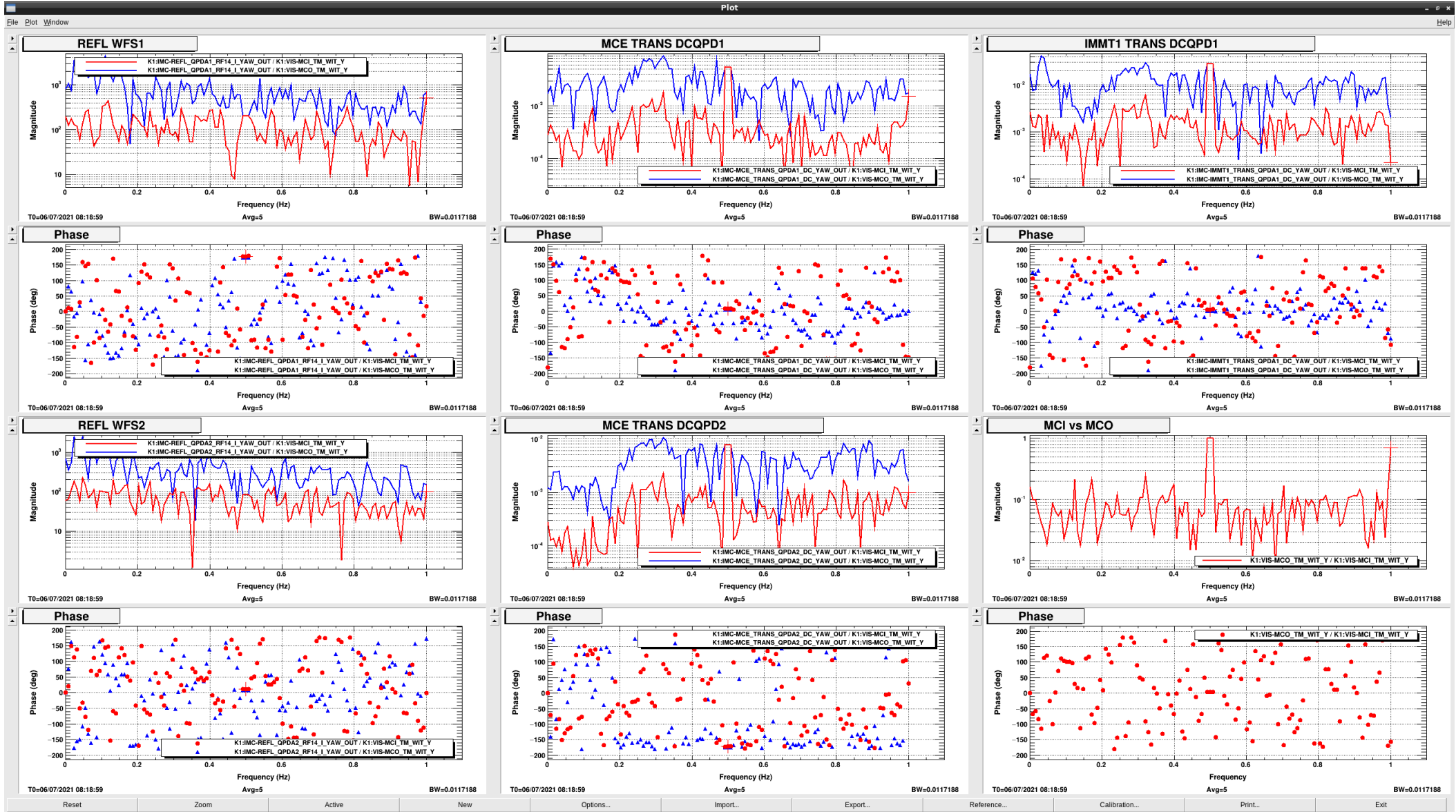
MCE_yaw



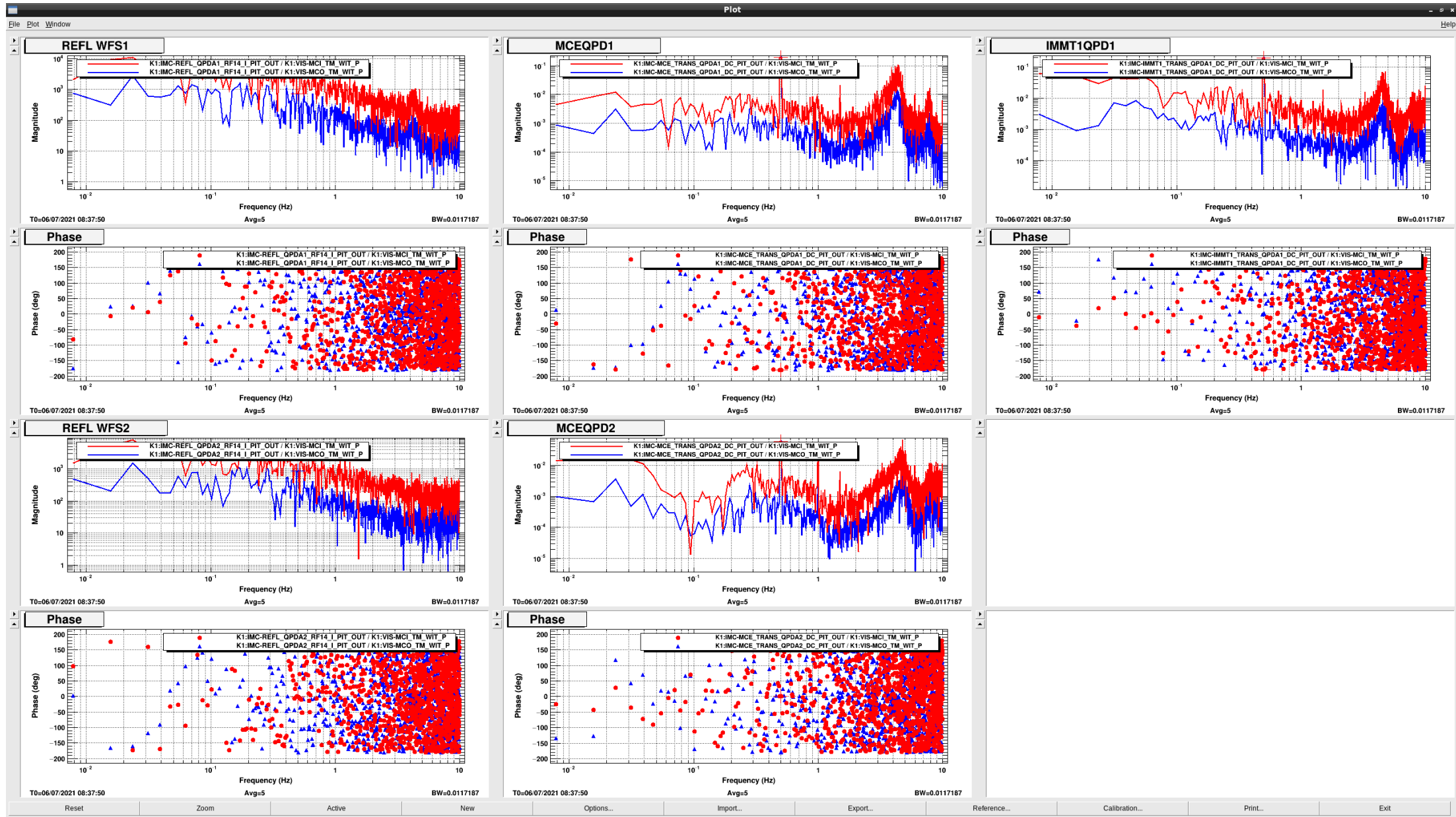
COM_pitch



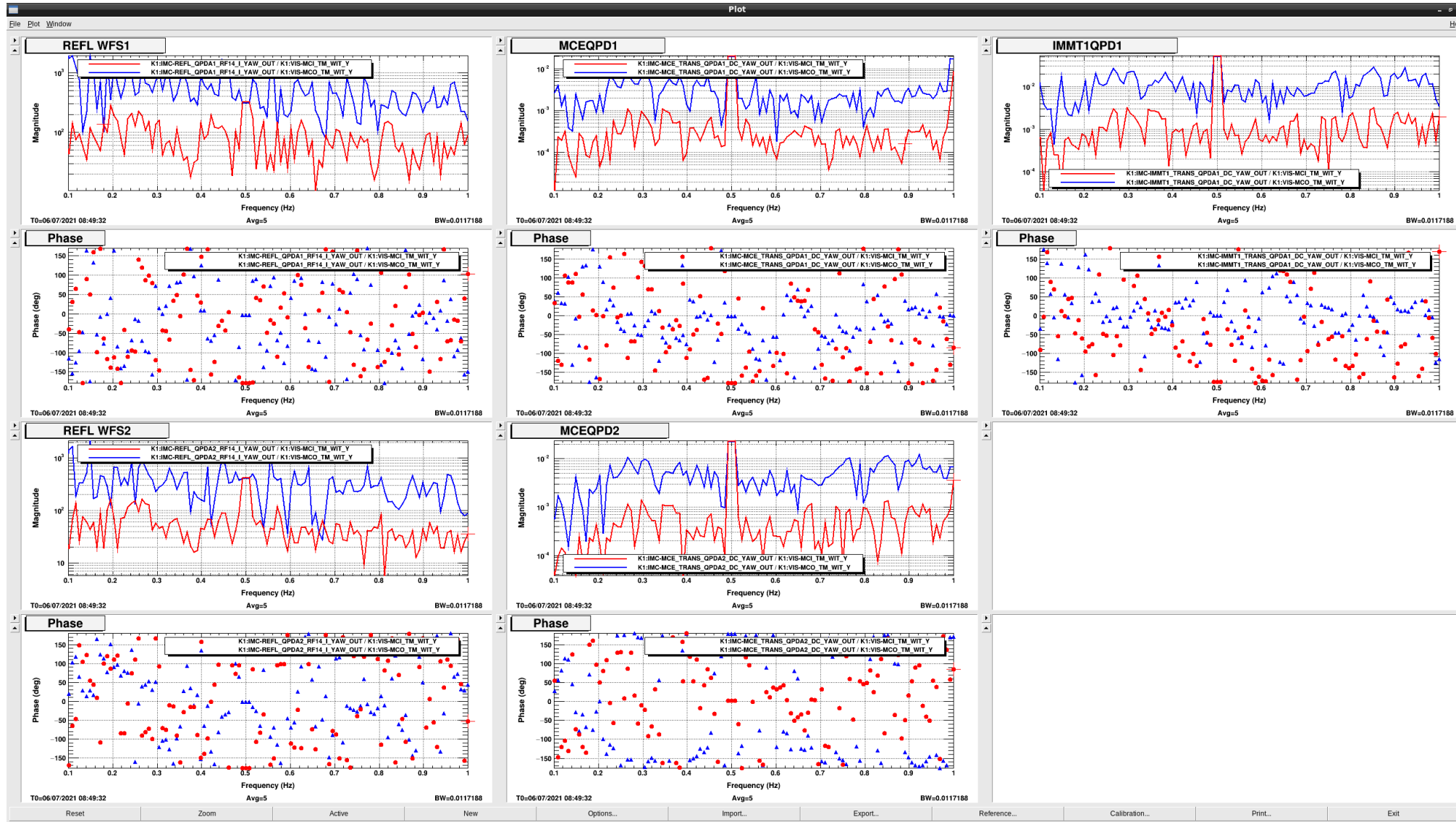
COM_yaw



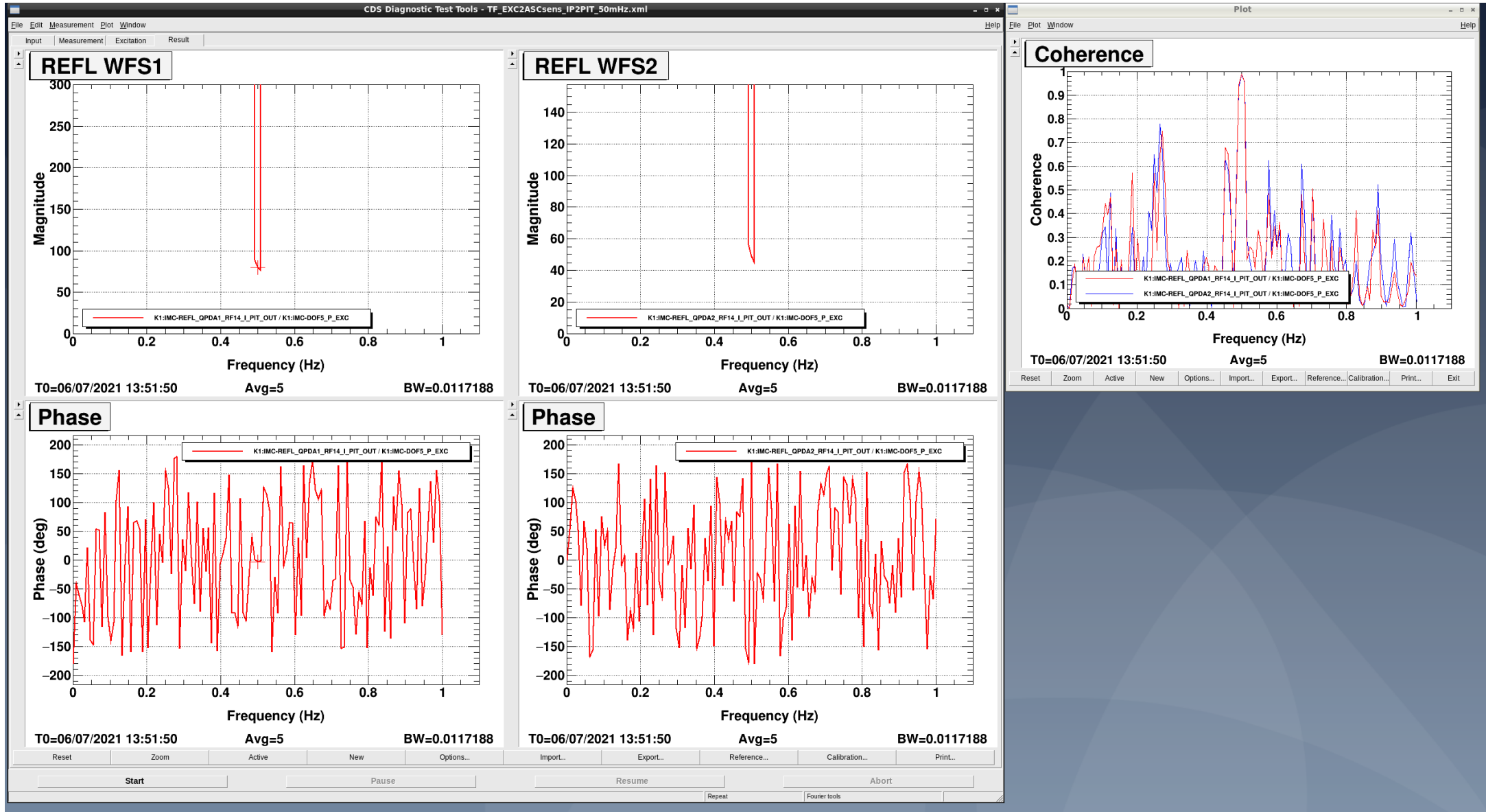
DIF__pitch



DIF_yaw



IP2_pitch



IP2_yaw

