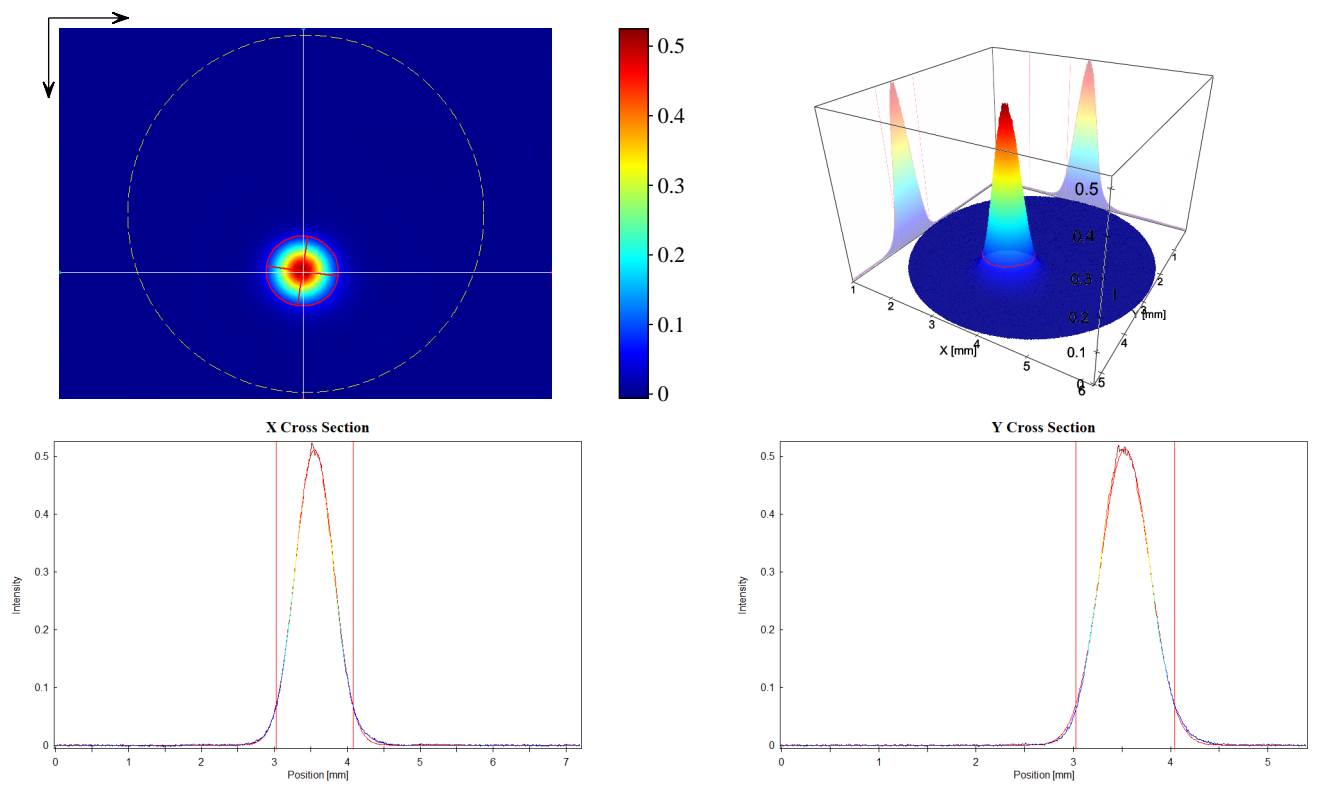


User: Camera: CinCam CMOS 1203 Serial: 1203-U2-0421-0092 Accessory Type: plain Date: 2021/04/28 Type: Single Measurement	Type: Wavelength: 635 nm Manufacturer: Model: Serial Number: Polarization: Output Power:	Beam Attenuator: Beam Splitter: Focusing Element: Other Optical Units:
Frames: 8 Frequency: Pixel Size: 1600 x 1200 Comment:	Operation Mode: CW Pulse Energy: Pulse Width: Pulse Frequency: M^2: Comment:	Laser Temp.: Ambient Temp.: Humidity:
Exposure Time: 300 us Gain: 1.00 x Brightness: invalid		Background: yes Flat Field: no Angular Response: no Baseline: yes Linearity: no



Statistic	Gauss-Fit (13.53 % ~ 1/e^2)	
Number of Pixel: 258448	Exponent: 2.00	
Power: 1.104E+4	Centroid x: 3.549 mm	
Peak: 0.5246	Centroid y: 3.532 mm	
Peak Pos x: 3.537 mm	--- Width Lab ---	
Peak Pos y: 3.537 mm	Width x: 1.055 mm	
SNR: 57.8 dB	Width y: 1.017 mm	
	--- Width Beam ---	
	Width Major: 1.056 mm	
	Width Minor: 1.016 mm	
	Azimuth Angle: 8.44 deg	
	Ellipticity: 0.962	
	Eccentricity: 0.273	

	Cross-Sect. Area: 0.8422 mm^2	
	Power Fraction: 86.13 %	
	GFI: 0.998	
	Correlation: 0.889	