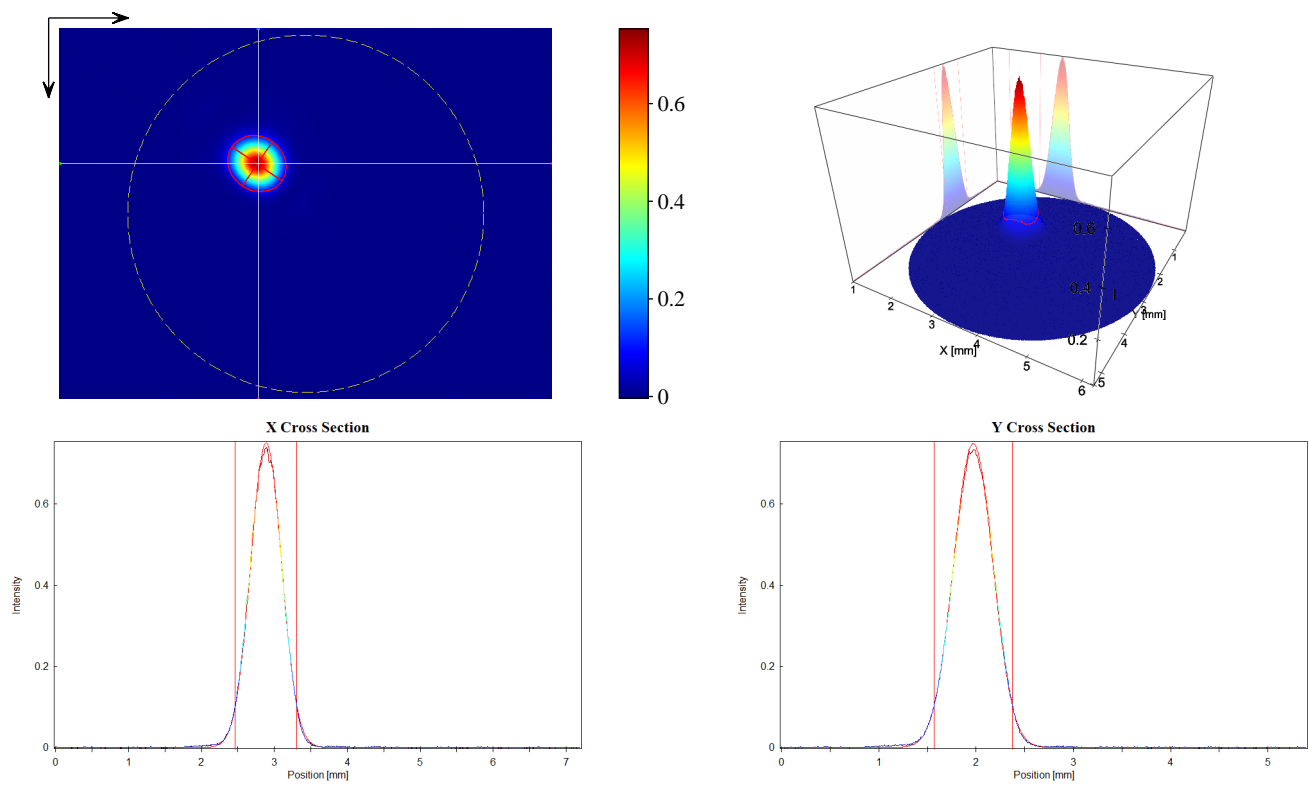


User: Camera: CinCam CMOS 1203 Serial: 1203-U2-0421-0092 Accessory Type: plain Date: 2021/04/28 Type: Single Measurement <hr/> Frames: 8 Frequency: Pixel Size: 1600 x 1200 Comment: <hr/> Exposure Time: 100 us Gain: 1.00 x Brightness: invalid	Type: Wavelength: 635 nm Manufacturer: Model: Serial Number: Polarization: Output Power: <hr/> Operation Mode: CW Pulse Energy: Pulse Width: Pulse Frequency: M^2: Comment:	Beam Attenuator: Beam Splitter: Focusing Element: Other Optical Units: <hr/> Laser Temp.: Ambient Temp.: Humidity: <hr/> Background: yes Flat Field: no Angular Response: no Baseline: yes Linearity: no
---	---	---



Statistic		Gauss-Fit (13.53 % ~ 1/e^2)	
Number of Pixel:	291472	Exponent:	2.00
Power:	1.042E+4	Centroid x:	2.887 mm
Peak:	0.7529	Centroid y:	1.968 mm
Peak Pos x:	2.894 mm	--- Width Lab ---	
Peak Pos y:	1.971 mm	Width x:	0.8521 mm
SNR:	61.0 dB	Width y:	0.8141 mm
		--- Width Beam ---	
		Width Major:	0.8834 mm
		Width Minor:	0.7801 mm
		Azimuth Angle:	34.20 deg
		Ellipticity:	0.883
		Eccentricity:	0.469

		Cross-Sect. Area:	0.5412 mm^2
		Power Fraction:	86.85 %
		GFI:	0.998
		Correlation:	0.866