

User:
 Camera: CinCam CMOS 1203
 Serial: 1203-U2-0421-0092
 Accessory Type: plain
 Date: 2021/04/28
 Type: Single Measurement

Frames: 8
 Frequency:
 Pixel Size: 1600 x 1200
 Comment:

Exposure Time: 300 us
 Gain: 1.00 x
 Brightness: invalid

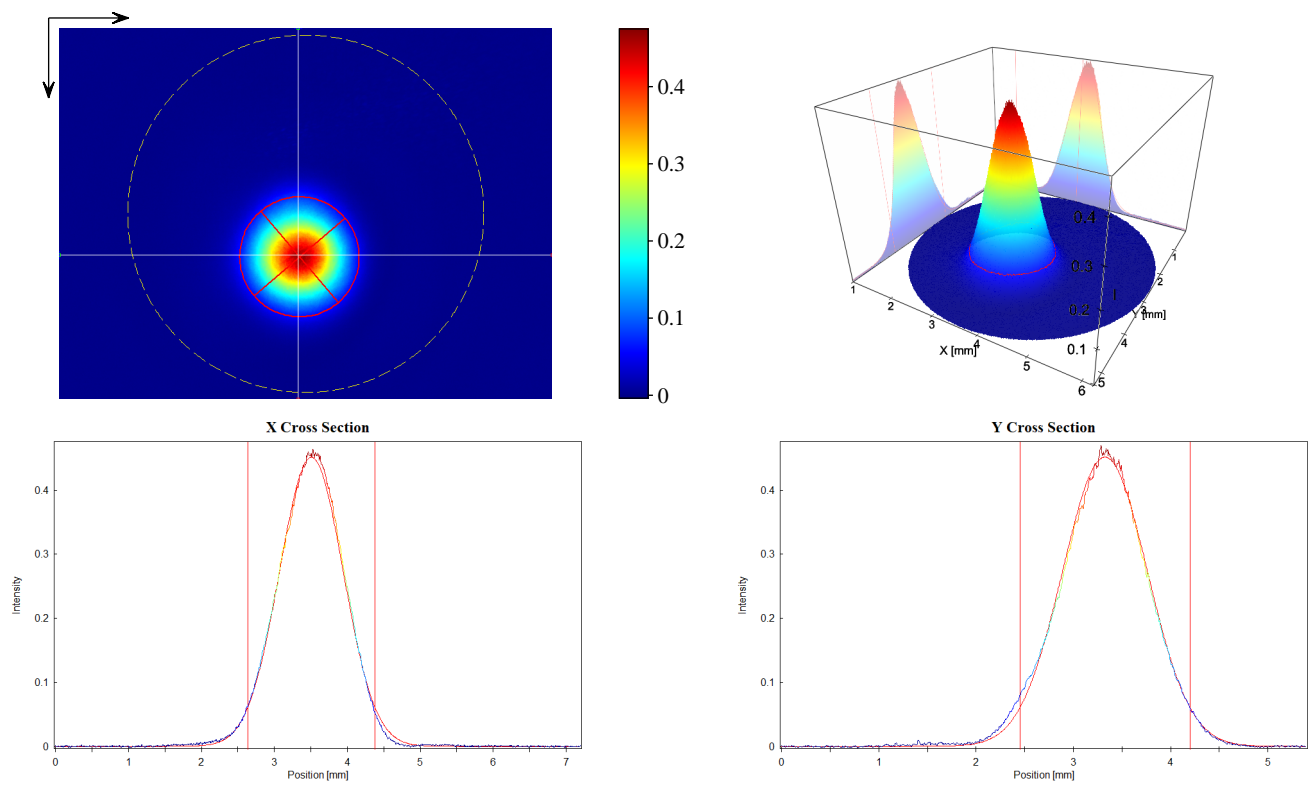
Type:
 Wavelength: 635 nm
 Manufacturer:
 Model:
 Serial Number:
 Polarization:
 Output Power:

Operation Mode: CW
 Pulse Energy:
 Pulse Width:
 Pulse Frequency:
 M²:
 Comment:

Beam Attenuator:
 Beam Splitter:
 Focusing Element:
 Other Optical Units:

Laser Temp.:
 Ambient Temp.:
 Humidity:

Background: yes
 Flat Field: no
 Angular Response: no
 Baseline: yes
 Linearity: no



Statistic

Number of Pixel: 589197
 Power: 2.711E+4
 Peak: 0.4747
 Peak Pos x: 3.569 mm
 Peak Pos y: 3.344 mm
 SNR: 56.5 dB

Gauss-Fit (13.53 % ~ 1/e²)

Exponent: 2.00
 Centroid x: 3.507 mm
 Centroid y: 3.325 mm
 --- Width Lab ---
 Width x: 1.744 mm
 Width y: 1.745 mm
 --- Width Beam ---
 Width Major: 1.747 mm
 Width Minor: 1.742 mm
 Azimuth Angle: 49.64 deg
 Ellipticity: 0.997
 Eccentricity: 0.072

 Cross-Sect. Area: 2.390 mm²
 Power Fraction: 86.75 %
 GFI: 0.998
 Correlation: 0.915