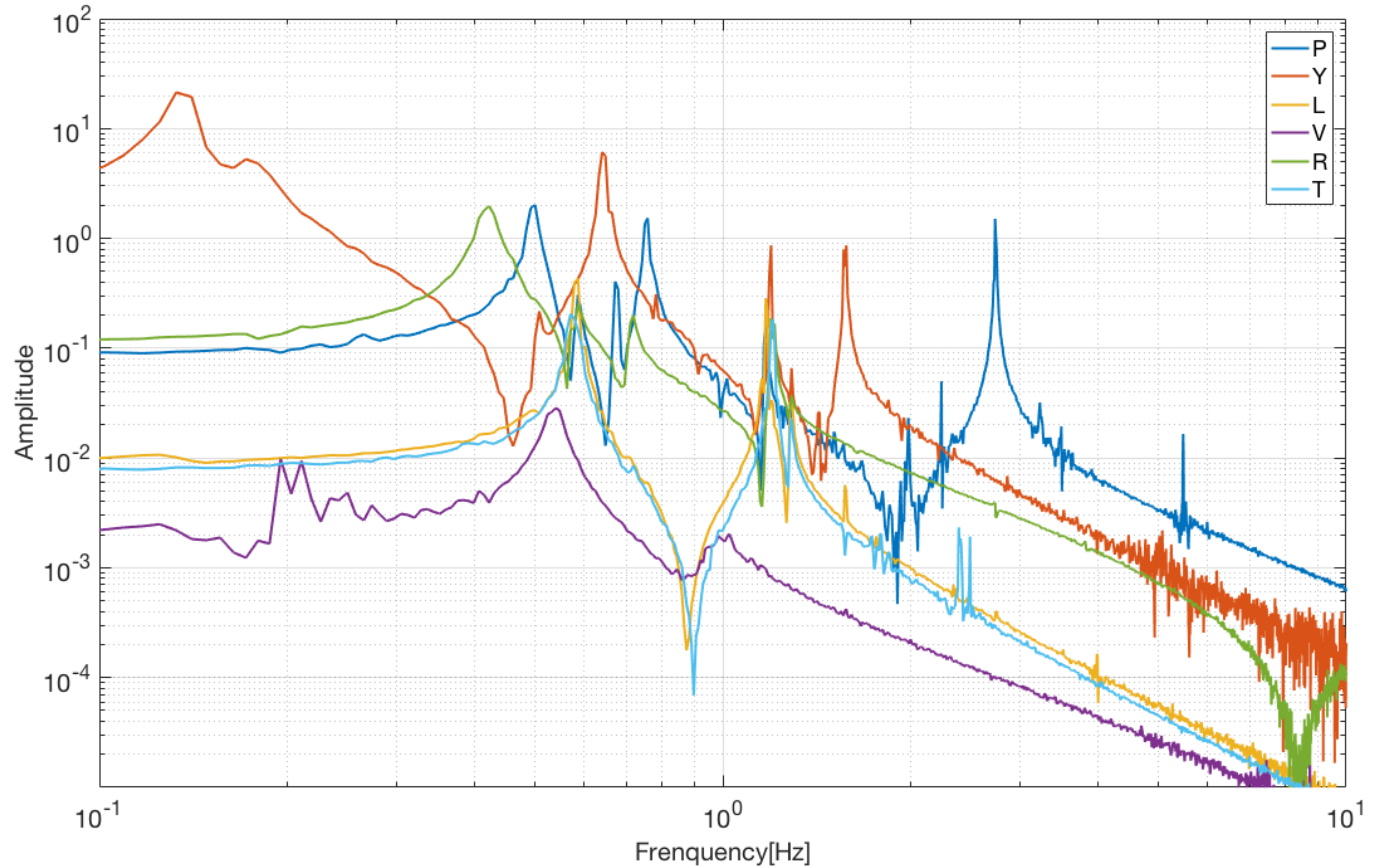
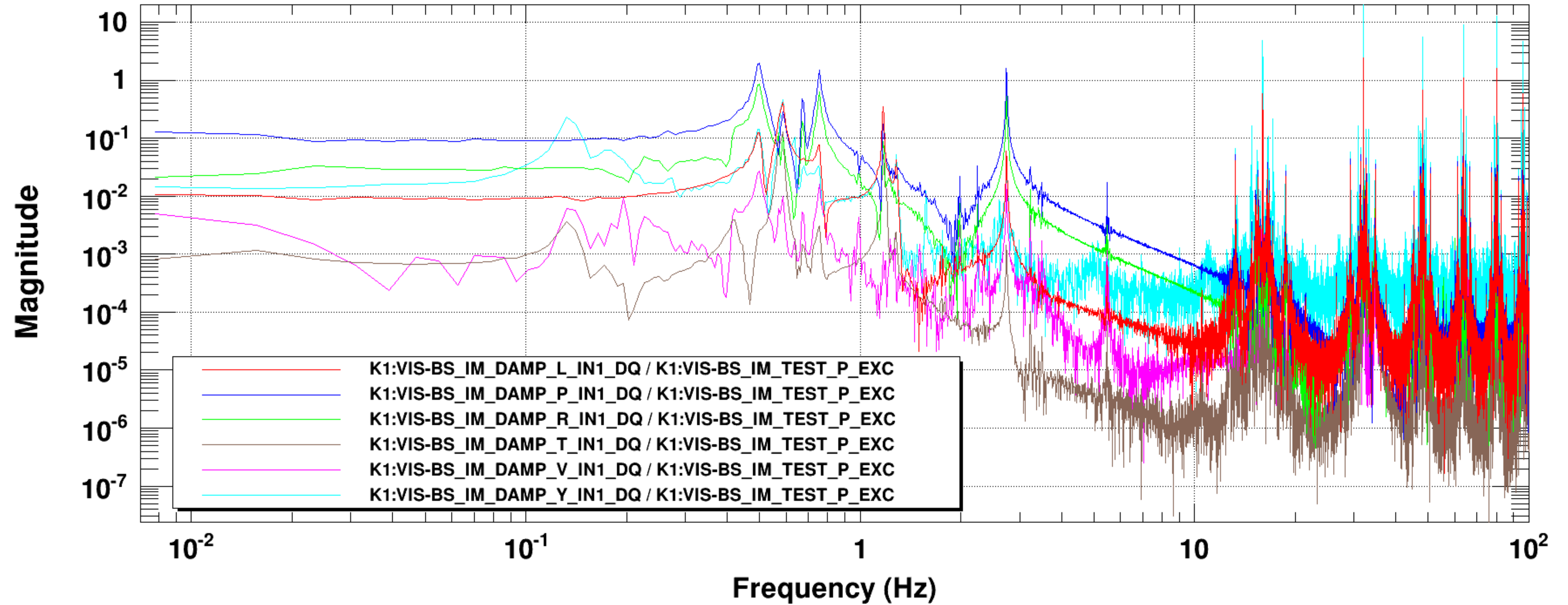


# Auto transfer functions of all BS\_IM DOFs



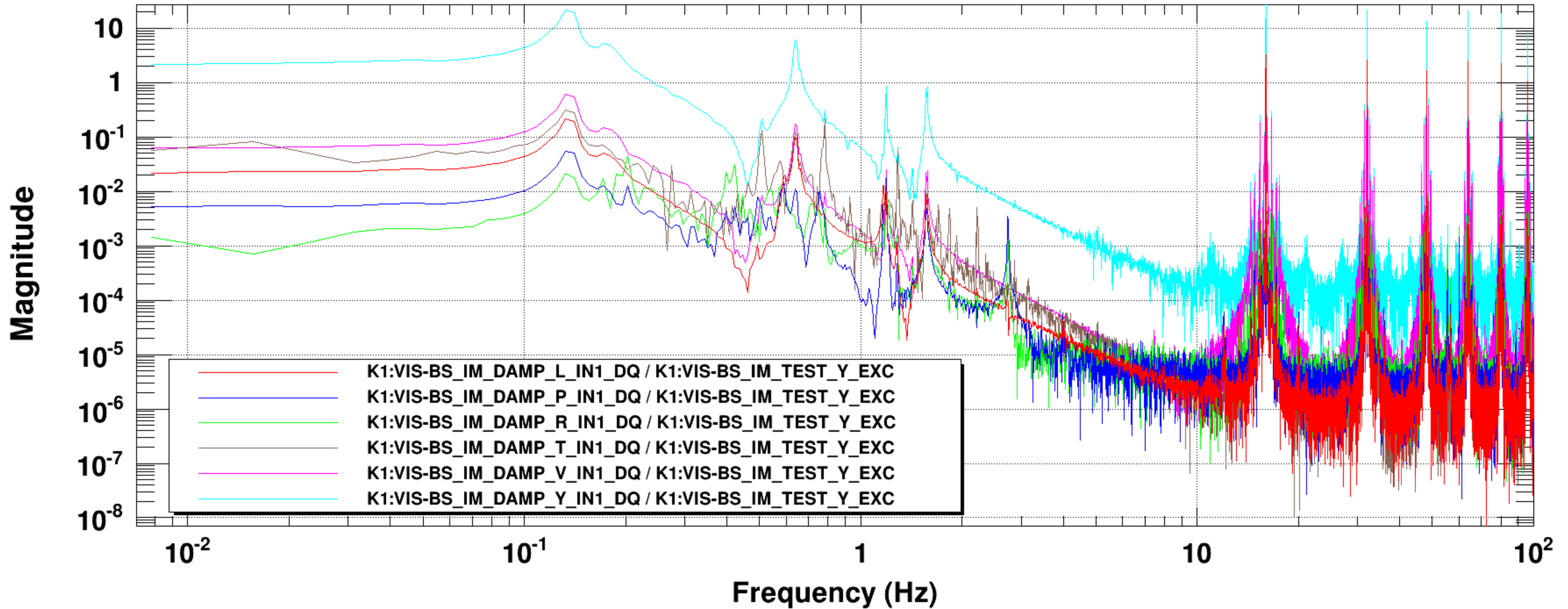
# Pitch → All



<b>L</b>	<b>T</b>	<b>V</b>	<b>R</b>	<b>P</b>	<b>Y</b>
0.035	<1%	0.01	0.39	1	0.033

Estimated sensing coupling

# Yaw → All

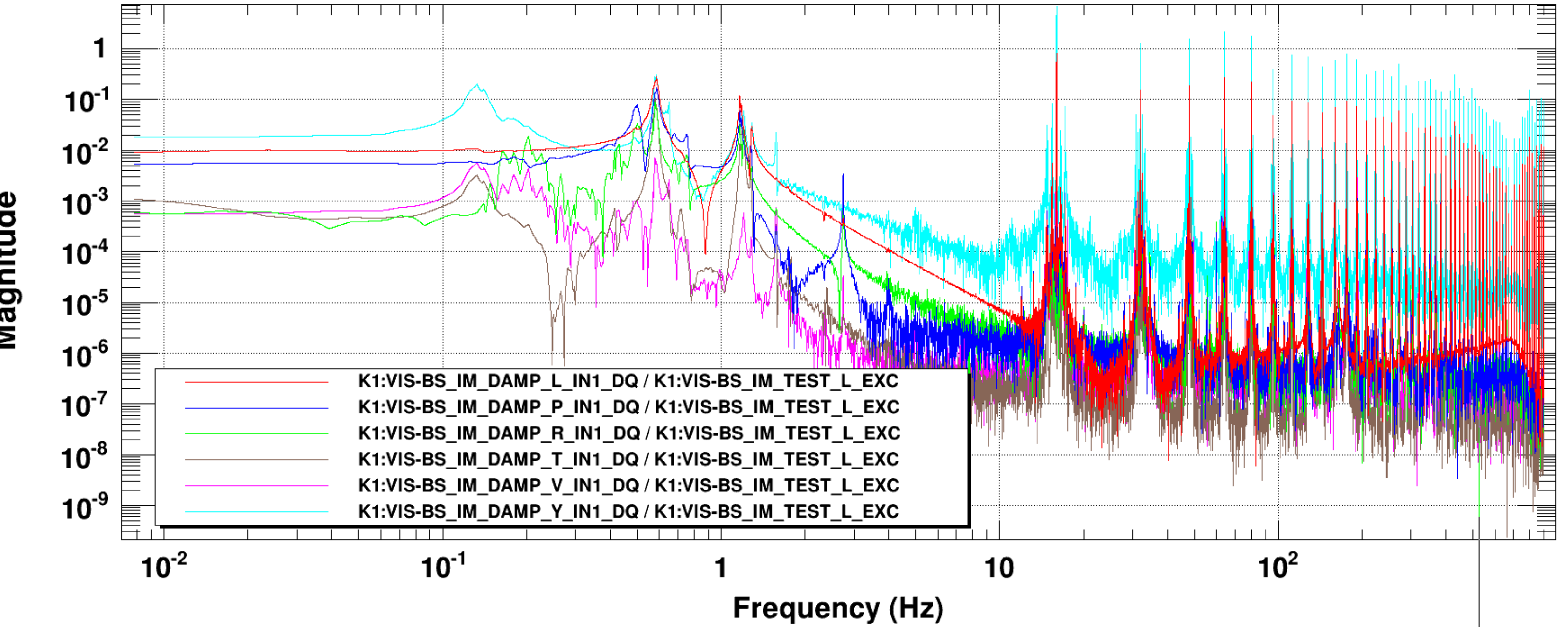


<b>L</b>	<b>T</b>	<b>V</b>	<b>R</b>	<b>P</b>	<b>Y</b>
<1%	-0.01	0.028	<1%	<1%	1

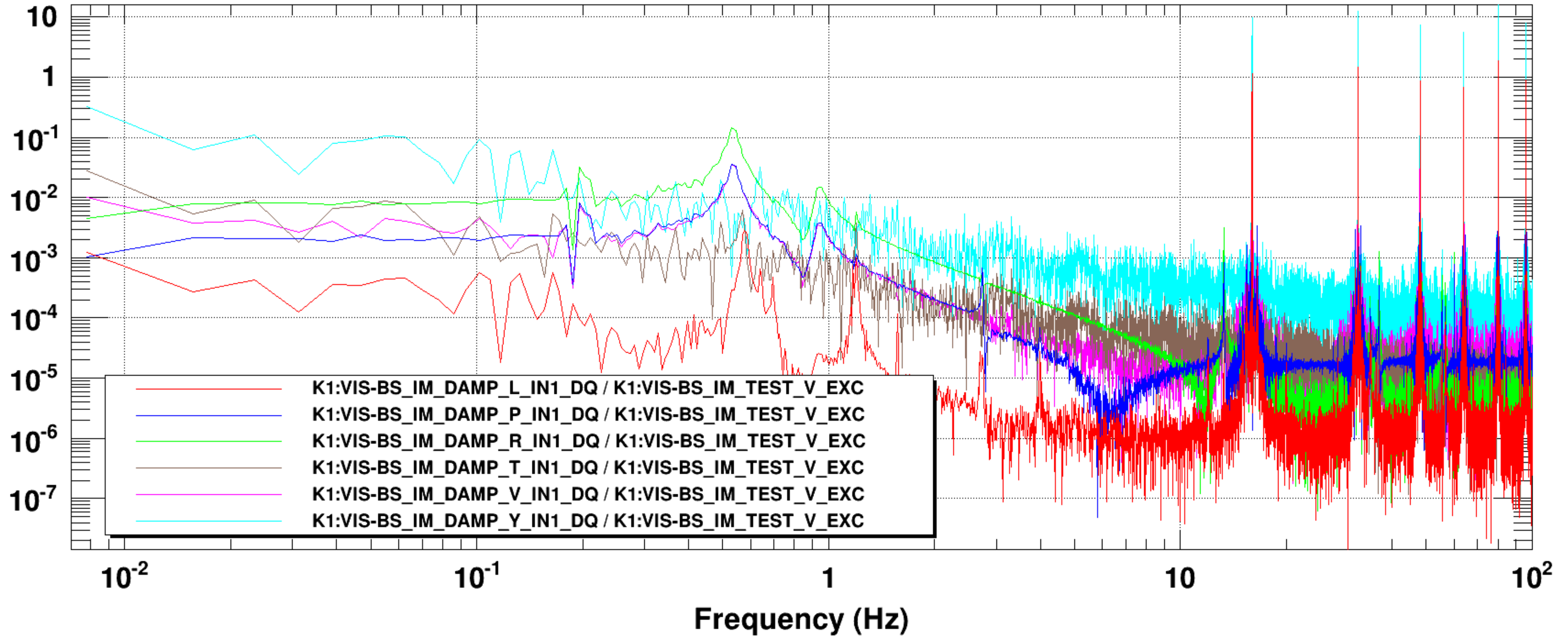
Estimated sensing coupling



Length → All



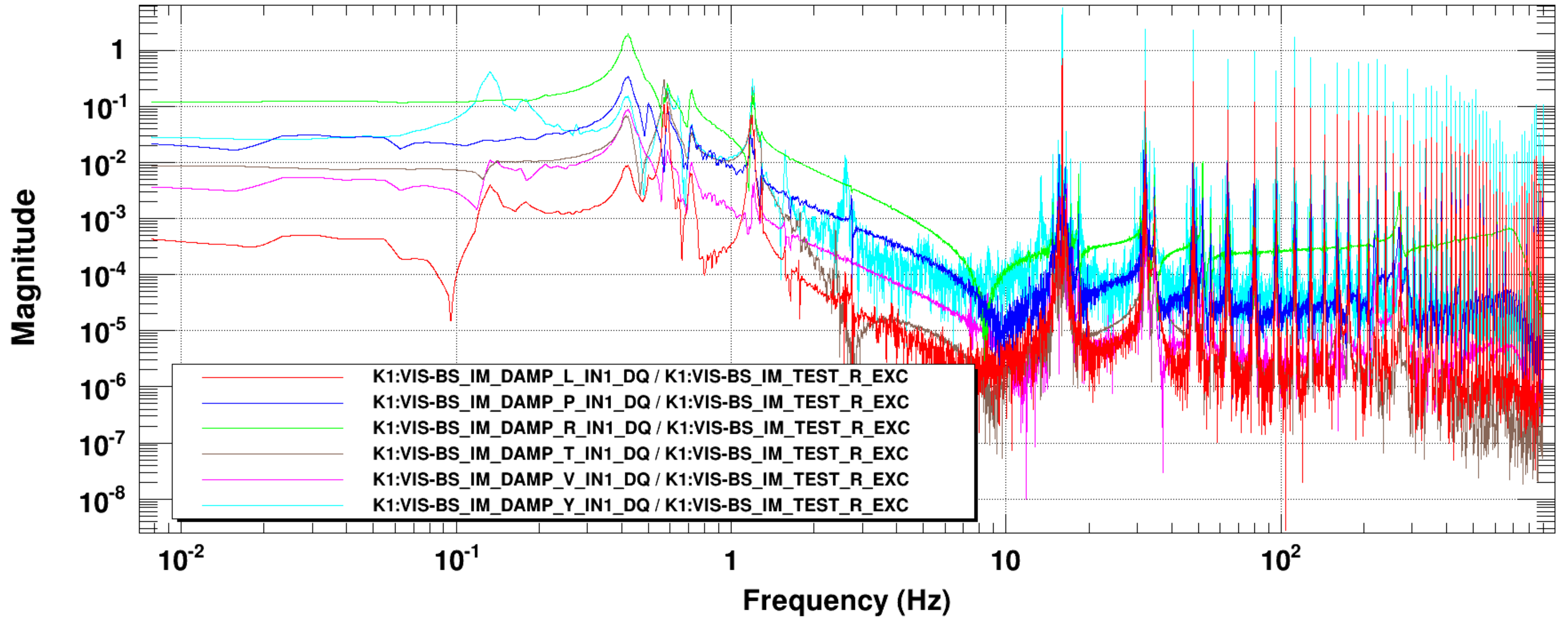
# Vertical → All



L	T	V	R	P	Y
<1%	<1%	1	-4	0.7	<1%

Estimated sensing coupling

# Roll → All

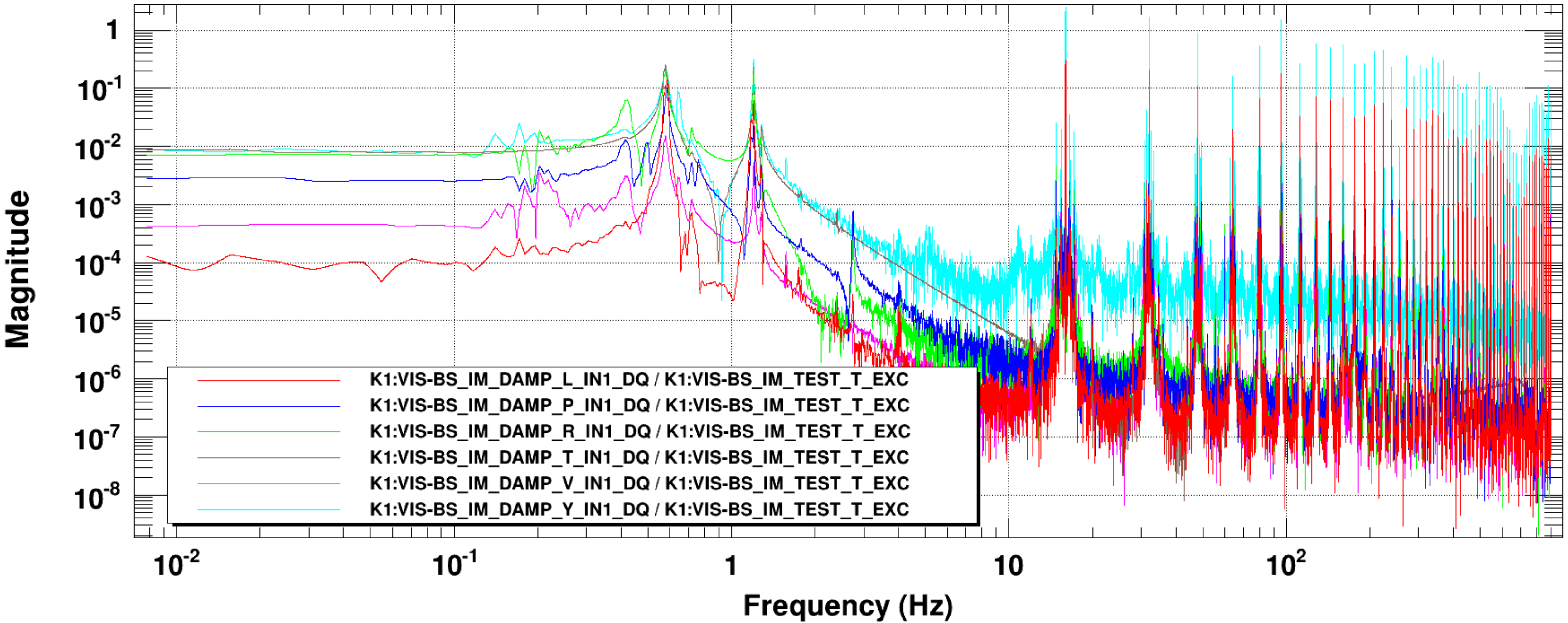


<b>L</b>	<b>T</b>	<b>V</b>	<b>R</b>	<b>P</b>	<b>Y</b>
<1%	0.035	-0.046	1	-0.179	-0.079

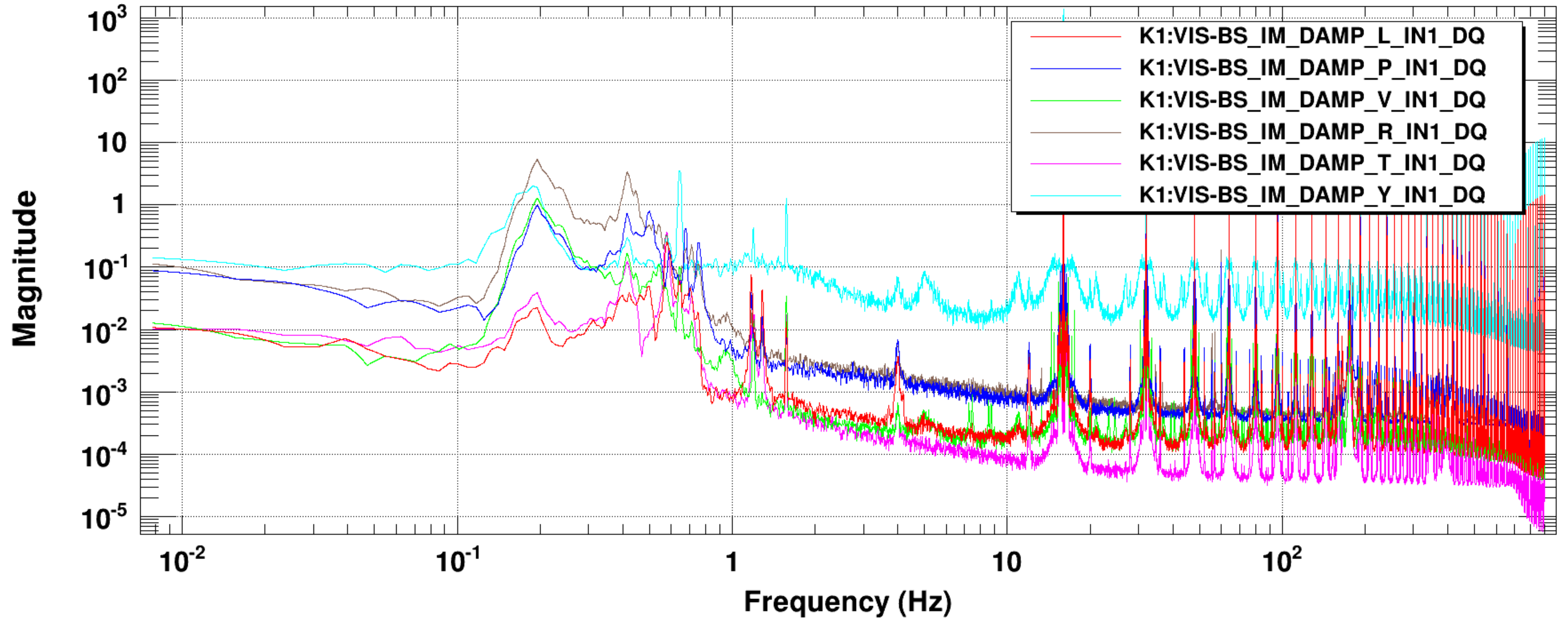
Estimated sensing coupling



# Translation → All



# Open loop spectra





# Open loop spectra (of the 6 OSEM)

